

ERMCO

EUROPEAN READY MIXED CONCRETE ORGANIZATION
ASSOCIATION EUROPEENNE DU BETON PRET A L'EMPLOI
EUROPÄISCHER TRANSPORTBETONVERBAND

**READY-MIXED CONCRETE
INDUSTRY STATISTICS**

YEAR 2014

JULY 2015

This Page Intentionally Left Blank

READY-MIXED CONCRETE INDUSTRY STATISTICS YEAR 2014

These statistics have been compiled for the year 2014 from ERMCO Members' annual returns as of 15 July 2015

CONTENTS

	ERMCO data collection form
Table 0	GDP and production (construction and ready mix sectors)
Table 1	National Data
Table 2	Materials
Table 3	Product characteristics
Table 4	Overall data and trend comparison
Table 5	Industry organization (ERMCO Members only)
Table 6	Product development (ERMCO Memers only)
Table 7	Delivery method and vehicles (ERMCO members only)
Table 8	Sector development (ERMCO members only)

ERMCO Members

Full ERMCO Members are the National Associations of ready mixed concrete producers of: Austria, Belgium, Czech Republic, Denmark, Finland, France, Germany, Ireland, Israel, Italy, Netherlands, Norway, Poland, Portugal, Spain, Sweden, Switzerland, Turkey, United Kingdom.

Data are presented separately for ERMCO Members belonging to the EU Countries, for all Full ERMCO Members, for former ERMCO Member Slovakia, for Corresponding Member Russia and Associated Members USA and Japan.

Note: The type of data collected in Germany has changed in 2010 therefore some data are not directly comparable to previous years. When this situation applies, the n.c. (not comparable) symbol is used.

Disclaimer

The information contained in this publication is derived from a number of different sources. All reasonable steps have been taken to ensure that all the information in this document is from a reliable and reputable source and is accurate. However, readers are advised that ERMCO takes no responsibility for the manner in which this information is subsequently used.

For further information, contact us:

ERMCO - European Ready Mixed Concrete Organization

Boulevard du Souverain 68 - 1170 Brussels - Belgium

Tel: +32 (2) 6455230

E-mail: secretariat@ermco.eu

Website: <http://www.ermco.eu>

JULY 2015

Data collection form

Country:

Prepared by:

Date:

		Y2014	Comments (*)	Y2012	Tolerance	
					-20%	20%
A	Total number of ready-mixed concrete producers					
A1	Country					
A2	Members					
B	Total number of employees/workers including indirect employees, if any (**)					
B1	Country					
B2	Members					
C	Turnover including transport – (millions of €)					
C1	Country		millions €			
C2	Members		millions €			
D	Total ready-mixed concrete production (millions of m³)					
D1	Country		millions m ³			
D2	Members		millions m ³			
E	Plants					
E1	Total number of plants - Country					
E2	Total number of plants - Members					
E21	% of static mixing plants		%			
E22	% of dry batching plants		%			
	Total		%			
Data F to P refer to total concrete production at national level						
F	Concrete					
F1	Total production including site-mixed and precast (millions of m ³)		millions m ³			
F2	% of ready-mixed concrete		%			
F3	% of site-mixed concrete		%			
F4	% of precast concrete		%			
	Total		%			
G	Cement					
G1	Total cement consumption (millions of tons)		millions t			
G2	% to ready-mixed concrete		%			
G3	Average cement content in ready-mixed concrete (kg/m ³)		kg/m ³			
H	Use of additions in ready-mixed concrete					
H1	Most commonly used addition (***)					
H2	Total consumption of most commonly used addition		millions t			
H3	Average addition content (kg/m ³)		kg/m ³			
J	% per strength class in ready-mixed concrete (N/mm²)					
J1	< C16/20		%			
J2	C16/20 C20/25		%			
J3	C25/30 (C28/35) C30/37		%			
J4	>= C35/45		%			
	Total		%			
L	% per consistence class in ready-mixed concrete					
L1	S1		%			
L2	S2 - S3		%			
L3	S4 - S5		%			
L4	Self-Compacting Concrete (SCC)		%			
	Total		%			
M	Delivery methods for ready-mixed concrete					
M1	% Company vehicles		%			
M2	% Outside contractors		%			
M3	% Customer collection		%			
	Total		%			
N	Truck, Pumps					
N1	Total number of truck mixers/delivery vehicles					
N2	% under 8 m ³		%			
N3	% 8 - 10 m ³		%			
N4	% over 10 m ³		%			
	Total		%			
N5	% pumped concrete on total ready-mixed concrete		%			
N6	Total number of free standing pumps					
P	Production of special concrete, % of total ready-mixed concrete					
P1	Road pavement concrete, roller compacted concrete		%			
P2	Other special concrete - non structural, excluding SCC (****)		%			

NOTES

(*) Write E if the value is estimated.

(**) Including indirect workers, e.g. self-employed truckmixer drivers

(***) FA = Fly Ash; SF = Silica Fume; GGBS = Ground Granulated Blastfurnace Slag; MS = MicroSilica

(****) Acoustic barriers, self-cleaning concrete, CO₂ reducing concrete, light transmitting concrete, high temperature resisting concrete, X gamma radiation resisting concrete

TABLE 0
% variation of GDP & Production (construction and ready mix sectors) 2007=100

Country	GDP at constant prices ⁽¹⁾								PRODUCTION															
									Construction ⁽¹⁾						Ready-Mixed Concrete									
	2007	2008	2009	2010	2011	2012	2013	2014	2007	2008	2009	2010	2011	2012	2013	2014	2007	2008	2009	2010	2011	2012	2013	2014
AT-Austria	100.0%	101.5%	97.7%	99.5%	102.6%	103.5%	103.7%	104.0%	100.0%	99.2%	97.4%	93.5%	95.4%	96.6%	99.1%	99.1%	100.0%	101.8%	91.2%	90.3%	92.9%	93.8%	92.9%	88.5%
BE-Belgium	100.0%	101.0%	98.3%	100.8%	102.4%	102.5%	102.8%	103.9%	100.0%	100.7%	97.4%	95.9%	101.4%	100.7%	96.8%	96.8%	100.0%	98.3%	86.7%	90.0%	96.7%	104.2%	108.3%	102.5%
CZ-Czech Republic	100.0%	102.7%	97.7%	100.0%	101.9%	101.1%	100.4%	102.4%	100.0%	99.9%	99.4%	91.9%	88.6%	82.0%	76.4%	76.4%	100.0%	112.9%	85.9%	75.3%	88.2%	81.2%	76.5%	76.5%
DK-Denmark	100.0%	99.3%	94.2%	95.8%	96.8%	96.2%	95.8%	96.8%	100.0%	106.4%	92.8%	83.0%	91.7%	89.1%	83.5%	83.5%	100.0%	93.1%	62.1%	58.6%	72.4%	69.0%	79.3%	79.3%
FI-Finland	100.0%	100.7%	92.4%	95.2%	97.6%	96.2%	94.9%	94.8%	100.0%	104.0%	90.4%	96.9%	105.0%	103.5%	100.7%	100.7%	100.0%	90.3%	64.5%	83.9%	96.8%	87.1%	87.1%	84.8%
FR-France	100.0%	100.2%	97.2%	99.2%	101.2%	101.6%	101.8%	102.2%	100.0%	97.9%	92.4%	88.7%	89.8%	86.7%	85.3%	85.3%	100.0%	98.0%	82.2%	83.1%	91.8%	86.4%	85.8%	80.9%
DE-Germany	100.0%	101.1%	95.4%	99.3%	102.8%	103.2%	103.3%	105.0%	100.0%	99.7%	99.7%	99.1%	106.8%	105.7%	105.5%	105.5%	100.0%	100.5%	92.4%	102.9%	117.6%	112.7%	111.8%	114.7%
IE-Ireland	100.0%	97.4%	91.2%	90.9%	93.5%	93.2%	93.3%	97.8%	100.0%	70.8%	44.6%	31.4%	26.2%	25.5%	28.5%	28.5%	100.0%	135.1%	51.4%	36.5%	32.4%	28.4%	28.4%	32.4%
IT-Italy	100.0%	99.0%	93.5%	95.1%	95.7%	93.0%	91.5%	91.1%	100.0%	99.1%	87.7%	84.6%	81.2%	70.1%	62.4%	62.4%	100.0%	97.3%	74.9%	70.7%	69.9%	53.1%	42.2%	37.2%
NL-Netherlands	100.0%	102.1%	98.7%	99.8%	101.4%	99.8%	99.1%	100.0%	100.0%	103.2%	97.5%	87.2%	91.7%	84.3%	81.3%	81.3%	100.0%	118.0%	104.5%	91.0%	98.9%	82.0%	74.2%	72.5%
PL-Poland	100.0%	103.9%	106.7%	110.6%	115.9%	117.9%	119.9%	124.1%	100.0%	109.7%	114.1%	119.2%	137.5%	130.4%	117.2%	117.2%	100.0%	132.5%	110.6%	116.3%	148.1%	121.9%	112.5%	120.0%
PT-Portugal	100.0%	100.2%	97.2%	99.1%	97.3%	93.3%	91.8%	92.7%	100.0%	95.8%	86.3%	76.9%	67.1%	56.3%	47.3%	47.3%	100.0%	95.7%	73.9%	65.2%	53.0%	32.2%	23.5%	24.3%
SK-Slovakia	100.0%	105.4%	99.9%	104.7%	107.5%	109.2%	110.8%	113.5%	100.0%	111.6%	99.3%	94.7%	92.7%	81.4%	77.1%	77.1%	100.0%	115.6%	81.3%	75.0%	71.9%	59.4%	53.1%	50.9%
ES-Spain	100.0%	101.1%	97.5%	97.5%	96.9%	94.9%	93.7%	95.0%	100.0%	83.7%	74.3%	59.1%	47.5%	45.0%	45.6%	45.6%	100.0%	72.4%	51.4%	41.0%	32.3%	22.7%	17.1%	16.7%
SE-Sweden	100.0%	99.4%	94.3%	99.9%	102.6%	102.3%	103.6%	105.8%	100.0%	99.3%	89.5%	96.9%	100.1%	103.6%	107.0%	107.0%	100.0%	106.1%	84.8%	100.0%	100.0%	100.0%	100.0%	100.0%
UK-United Kingdom	100.0%	99.7%	95.4%	97.2%	98.8%	99.4%	101.1%	104.0%	100.0%	98.7%	87.2%	93.6%	95.7%	88.4%	89.4%	89.4%	100.0%	80.1%	61.7%	61.3%	75.0%	68.8%	76.6%	88.7%
Total/Average EU	100.0%	100.9%	96.7%	99.0%	100.9%	100.5%	100.5%	102.1%	100.0%	98.7%	90.6%	87.0%	88.6%	84.5%	81.4%	81.4%	100.0%	103.0%	78.7%	77.6%	83.6%	75.2%	73.1%	73.1%
IL-Israel	-	-	-	-	-	-	-	-	-	-	-	-	-	-	-	-	100.0%	96.9%	96.9%	112.2%	122.4%	132.7%	142.9%	142.9%
NO-Norway	100.0%	100.4%	98.8%	99.3%	100.3%	103.1%	103.8%	106.2%	100.0%	100.9%	92.6%	92.6%	95.6%	102.3%	109.2%	109.2%	100.0%	97.4%	76.3%	78.9%	92.1%	97.4%	100.0%	98.7%
CH-Switzerland	100.0%	102.3%	100.1%	103.1%	104.9%	106.1%	108.1%	108.1%	100.0%	102.4%	103.9%	105.9%	107.7%	106.5%	107.7%	107.7%	100.0%	100.0%	100.0%	100.0%	103.3%	107.4%	99.2%	99.2%
TK-Turkey	100.0%	100.7%	95.8%	104.6%	113.7%	116.2%	120.9%	120.9%	100.0%	92.1%	77.2%	91.6%	102.0%	102.6%	110.4%	110.4%	100.0%	93.5%	89.2%	107.1%	121.0%	125.0%	137.1%	143.8%
Total/Average ERMCO	100.0%	100.9%	96.9%	99.5%	101.8%	101.7%	102.1%	103.6%	100.0%	98.7%	90.7%	88.6%	90.7%	87.5%	85.8%	85.8%	100.0%	101.8%	81.1%	82.0%	88.8%	83.9%	82.4%	82.7%
Russia	-	-	-	-	-	-	-	-	-	-	-	-	-	-	-	-	100.0%	136.8%	118.4%	105.3%	105.3%	110.5%	115.8%	105.3%
USA	100.0%	99.7%	96.9%	99.4%	101.0%	103.3%	105.6%	108.1%	-	-	-	-	-	-	-	-	100.0%	85.7%	77.1%	77.1%	64.4%	71.4%	73.0%	73.0%
Japan	100.0%	99.0%	93.5%	97.8%	97.4%	98.8%	100.3%	100.3%	-	-	-	-	-	-	-	-	-	-	-	-	-	-	-	-

Legend: (1) Source EUROSTAT: <http://ec.europa.eu/eurostat>.
 data in bold are estimated

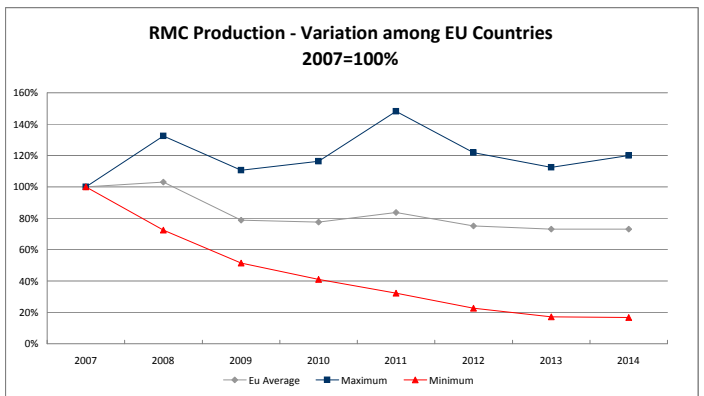
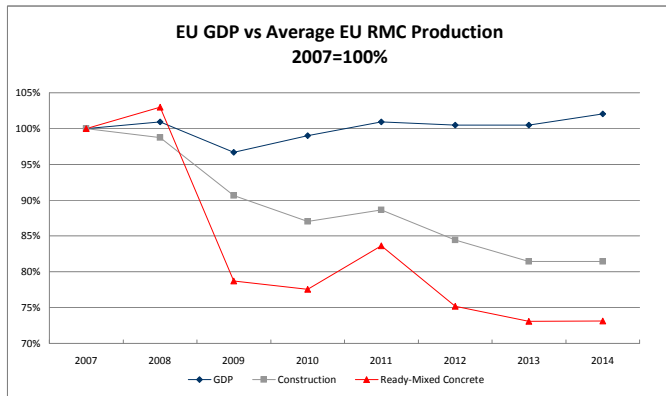


TABLE 1
Members' and country data

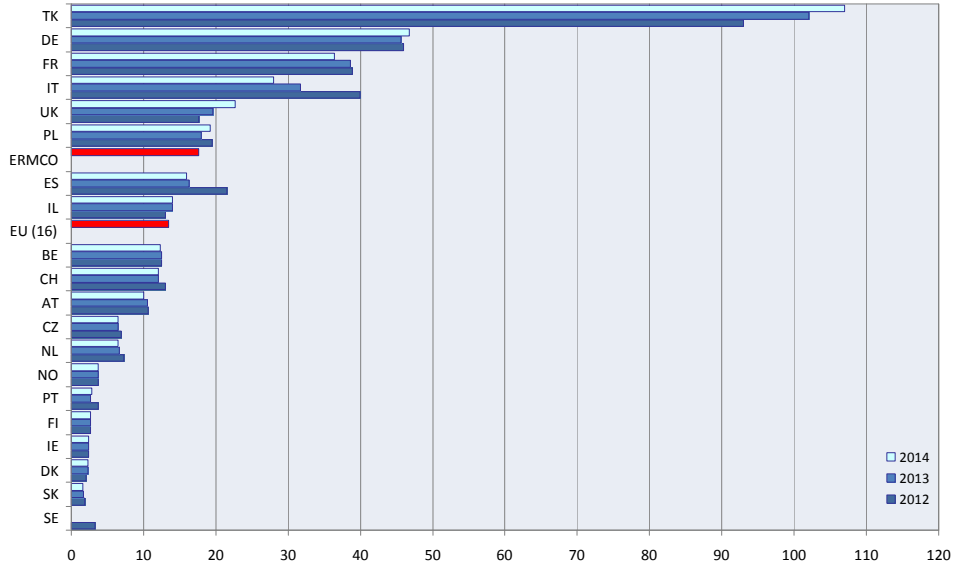
Country	Total RMC members millions of m ³			Total RMC country millions of m ³			Members vs Country %			Population ¹ millions			Production per capita m ³ /capita		
	2012	2013	2014	2012	2013	2014	2012	2013	2014	2012	2013	2014	2012	2013	2014
AT-Austria	9,6	9,5	9,2	10,6	10,5	10,0	90,6	90,5	92,0	8,4	8,5	8,5	1,3	1,2	1,2
BE-Belgium	7,8	7,7	7,8	12,5	12,5	12,3	62,4	61,2	63,4	11,1	11,2	11,2	1,1	1,1	1,1
CZ-Czech Republic	5,2	5,0	5,0	6,9	6,5	6,5	75,0	76,9	76,9	10,5	10,5	10,5	0,7	0,6	0,6
DK-Denmark	1,8	2,1	2,1	2,0	2,3	2,3	90,0	91,3	91,3	5,6	5,6	5,6	0,4	0,4	0,4
FI-Finland	2,4	2,4	2,4	2,7	2,7	2,6	88,9	88,9	90,9	5,4	5,4	5,5	0,5	0,5	0,5
FR-France	31,5	30,5	28,9	38,9	38,6	36,4	81,0	79,0	79,4	65,3	65,6	65,8	0,6	0,6	0,6
DE-Germany	26,6	26,3	27,0	46,0	45,6	46,8	57,8	57,7	57,7	80,3	80,5	80,8	0,6	0,6	0,6
IE-Ireland	2,1	2,1	2,1	2,4	2,4	2,4	87,5	87,5	87,5	4,6	4,6	4,6	0,5	0,5	0,5
IT-Italy	18,0	15,0	6,5	39,9	31,7	28,0	45,1	47,3	23,2	59,4	59,7	60,8	0,7	0,5	0,5
NL-Netherlands	5,3	5,0	4,8	7,3	6,6	6,5	72,6	75,0	73,8	16,7	16,8	16,8	0,4	0,4	0,4
PL-Poland	8,0	7,4	7,8	19,5	18,0	19,2	41,0	41,1	40,5	38,1	38,1	38,0	0,5	0,5	0,5
PT-Portugal	2,9	2,2	2,2	3,7	2,7	2,8	78,4	81,5	78,6	10,5	10,5	10,4	0,4	0,3	0,3
SK-Slovakia	1,1	1,0	0,8	1,9	1,7	1,6	59,3	57,1	50,4	5,4	5,4	5,4	0,3	0,3	0,3
ES-Spain	15,1	9,9	9,3	21,6	16,3	15,9	70,0	61,0	58,4	46,8	46,7	46,5	0,5	0,3	0,3
SE-Sweden	2,9	3,1	3,2	3,3	-	-	87,9	-	-	9,5	9,6	9,6	0,3	-	-
UK-United Kingdom	14,2	15,8	16,4	17,6	19,6	22,7	80,7	80,6	72,2	63,5	63,9	64,3	0,3	0,3	0,4
Total/Average EU	154,5	144,9	135,5	236,8	217,7	216,0	65,3	66,6	62,7	441,1	442,4	444,4	0,5	0,5	0,5
IL-Israel	10,0	9,1	9,1	13,0	14,0	14,0	76,9	65,0	65,0	8,0	8,1	8,1	1,6	1,7	1,7
NO-Norway	3,5	3,6	3,6	3,7	3,8	3,8	93,2	96,8	96,8	5,0	5,1	5,1	0,7	0,7	0,7
CH-Switzerland	12,3	11,4	11,4	13,0	12,0	12,0	94,6	95,0	95,0	8,0	8,0	8,1	1,6	1,5	1,5
TK-Turkey	60,0	65,0	68,0	93,0	102,0	107,0	64,5	63,7	63,6	74,7	75,6	76,7	1,2	1,3	1,4
Total/Average ERMCO	240,3	234,0	227,6	359,5	349,4	352,8	66,8	67,0	64,5	536,8	539,3	542,5	0,7	0,6	0,7
Russia	5,0	6,0	5,0	42,0	44,0	40,0	11,9	13,6	12,5	141,9	141,9	141,9	0,3	0,3	0,3
USA	140,0	115,0	115,0	225,0	230,0	230,0	62,2	50,0	50,0	317,3	317,3	317,3	0,7	0,7	0,7
Japan	80,0	86,0	86,0	92,0	99,0	99,0	87,0	86,9	86,9	128,0	128,0	128,0	0,7	0,8	0,8

Country	Total production Members Yearly % change		Total production Country Yearly % change		Member vs Country Yearly % change		Population Yearly % change		Production per capita Yearly % change	
	2013 vs 2012	2014 vs 2013	2013 vs 2012	2014 vs 2013	2013 vs 2012	2014 vs 2013	2013 vs 2012	2014 vs 2013	2013 vs 2012	2014 vs 2013
AT-Austria	-1,0	-3,2	-0,9	-4,8	-0,1	1,7	0,5	0,7	-1,5	-5,4
BE-Belgium	-1,9	2,0	0,0	-1,6	-1,9	3,6	0,6	0,4	-0,6	-2,0
CZ-Czech Republic	-3,7	0,0	-6,1	0,0	2,6	0,0	0,1	0,0	-6,2	0,0
DK-Denmark	16,7	0,0	15,0	0,0	1,4	0,0	0,4	0,4	14,5	-0,4
FI-Finland	0,0	-0,4	0,0	-2,6	0,0	2,2	0,5	0,5	-0,5	-3,0
FR-France	-3,2	-5,2	-0,8	-5,7	-2,4	0,5	0,4	0,4	-1,2	-6,1
DE-Germany	-1,1	2,7	-0,9	2,6	-0,3	0,0	0,2	0,3	-1,1	2,3
IE-Ireland	0,0	0,0	0,0	0,0	0,0	0,0	0,2	0,3	-0,2	-0,3
IT-Italy	-16,7	-56,7	-20,6	-11,7	4,9	-50,9	0,5	1,8	-20,9	-13,3
NL-Netherlands	-6,4	-4,0	-9,5	-2,4	3,4	-1,7	0,3	0,3	-9,7	-2,7
PL-Poland	-7,5	5,1	-7,7	6,7	0,2	-1,4	0,0	-0,1	-7,7	6,8
PT-Portugal	-24,1	0,0	-27,0	3,7	4,0	-3,6	-0,5	-0,6	-26,6	4,3
SK-Slovakia	-13,4	-15,3	-10,1	-4,1	-3,7	-11,6	0,1	0,1	-10,2	-4,2
ES-Spain	-34,2	-6,3	-24,5	-2,1	-12,8	-4,3	-0,2	-0,5	-24,4	-1,6
SE-Sweden	6,9	3,2	-	-	-	-	0,8	0,9	-	-
UK-United Kingdom	11,3	3,8	11,4	15,8	-0,1	-10,4	0,6	0,6	10,6	15,1
Average EU	-6,2	-6,5	-8,1	-0,8	2,0	-5,8	0,3	0,5	-8,3	-1,2
IL-Israel	-9,0	0,0	7,7	0,0	-15,5	0,0	1,3	0,0	6,4	0,0
NO-Norway	5,2	0,0	1,4	0,0	3,8	0,0	1,3	1,1	0,0	-1,1
CH-Switzerland	-7,3	0,0	-7,7	0,0	0,4	0,0	1,1	1,3	-8,7	-1,2
TK-Turkey	8,3	4,6	9,7	4,9	-1,2	-0,3	1,2	1,4	8,4	3,5
Average ERMCO	-2,6	-2,8	-2,8	1,0	0,2	-3,7	0,5	0,6	-3,2	0,4
Russia	20,0	-16,7	4,8	-9,1	14,5	-8,3	0,0	0,0	4,8	-9,1
USA	-17,9	0,0	2,2	0,0	-19,6	0,0	0,0	0,0	2,2	0,0
Japan	7,5	0,0	7,6	0,0	-0,1	0,0	0,0	0,0	7,6	0,0

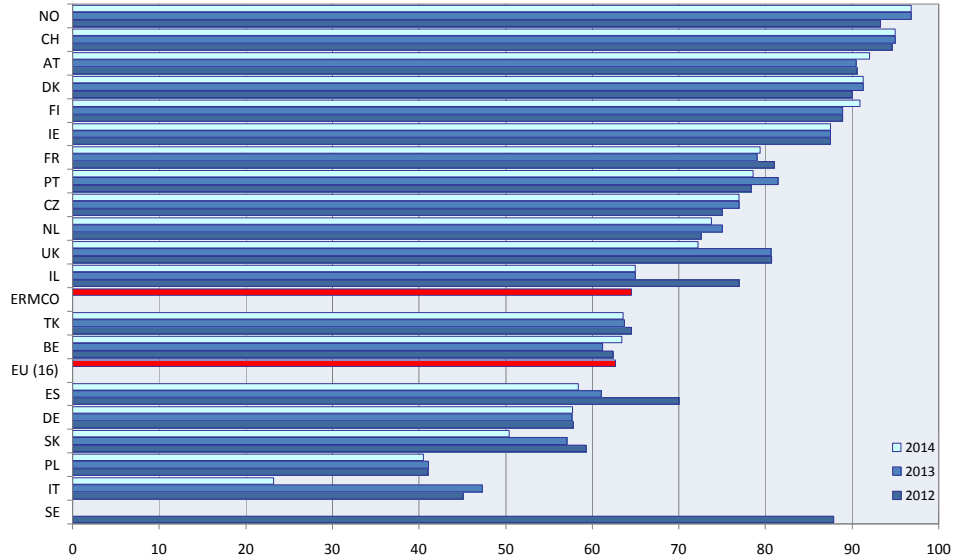
Legend: data in bold are estimated

(1) Source EUROSTAT: <http://ec.europa.eu/eurostat>

Total rmc production country
[millions of m³]



Members vs Country rmc production
[%]



Country rmc production per capita
[m³/capita]

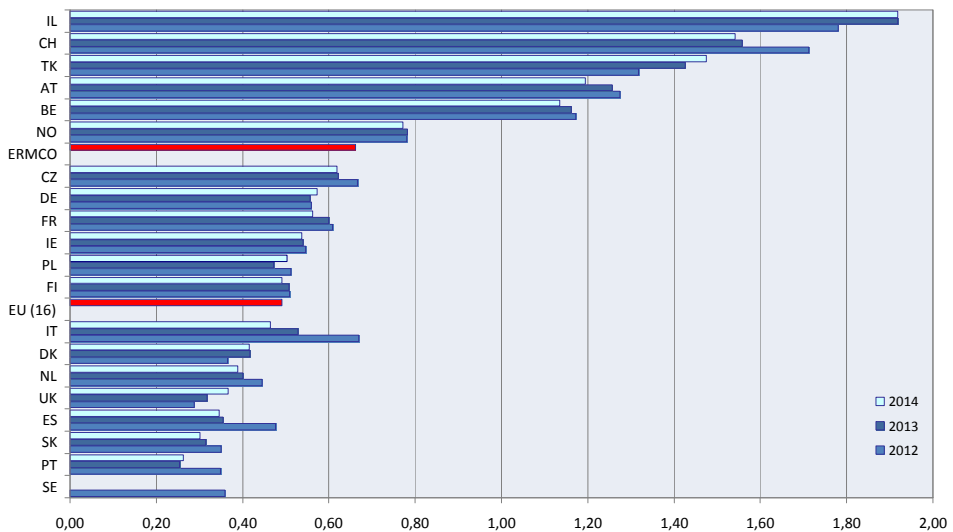


TABLE 2a
Materials-Cement

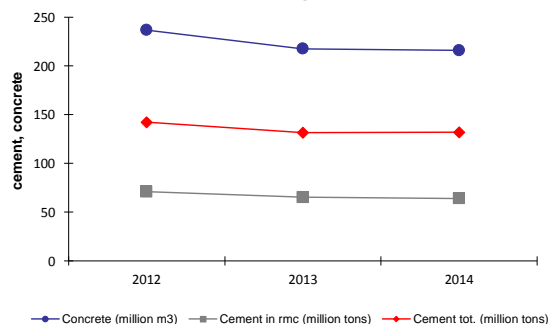
Country	Total cem. consumption millions of tons			% cement to ready-mix %			Average cement content kg/m ³		
	2012	2013	2014	2012	2013	2014	2012	2013	2014
AT-Austria	4.6	<u>5.1</u>	<u>5.1</u>	60.0	60.0	60.0	260.0	260.0	260.0
BE-Belgium	6.6	6.0	6.1	55.0	55.0	55.0	270.0	275.0	285.0
CZ-Czech Republic	3.4	<u>3.2</u>	<u>3.3</u>	<u>65.0</u>	<u>65.0</u>	<u>65.0</u>	272.0	269.0	271.0
DK-Denmark	1.3	<u>1.3</u>	1.4	<u>42.0</u>	<u>45.0</u>	<u>46.0</u>	282.0	275.0	275.0
FI-Finland	1.8	1.7	1.7	50.0	52.0	53.0	345.0	345.0	345.0
FR-France	20.0	19.2	<u>18.2</u>	58.2	59.3	59.8	298.0	290.0	291.0
Germany	26.7	26.5	27.1	51.0	51.9	50.8	298.0	296.0	294.0
IE-Ireland	<u>1.3</u>	1.1	<u>1.2</u>	<u>85.0</u>	<u>85.0</u>	<u>85.0</u>	260.0	260.0	260.0
IT-Italy	25.6	21.7	<u>20.1</u>	49.0	50.8	44.0	310.0	305.0	310.0
NL-Netherlands	4.4	4.2	<u>4.1</u>	52.0	50.0	48.0	303.0	301.0	313.0
PL-Poland	15.7	<u>14.5</u>	15.4	35.2	35.2	37.0	288.2	279.0	275.0
PT-Portugal	3.5	2.8	2.6	20.0	18.0	23.0	210.0	210.0	220.0
SK-Slovakia	<u>1.8</u>	1.8	<u>1.8</u>	42.0	40.0	40.0	310.0	305.0	302.0
ES-Spain	13.6	<u>10.7</u>	10.8	45.3	42.0	41.0	284.0	283.0	280.0
SE-Sweden	2.3	2.2	2.2	53.0	-	-	378.0	-	-
UK-United Kingdom	9.7	<u>9.6</u>	<u>10.9</u>	56.0	56.0	54.5	250.0	250.0	260.0
Total/Average EU	142.4	131.6	132.0	49.9	49.6	48.5	290.4	285.1	286.2
IL-Israel	5.3	<u>5.9</u>	<u>6.0</u>	72.0	75.0	75.0	280.0	280.0	280.0
NO-Norway	1.9	2.0	2.0	73.0	72.1	72.1	386.0	382.0	382.0
CH-Switzerland	5.0	5.3	<u>5.4</u>	<u>77.5</u>	<u>76.3</u>	76.3	280.0	280.0	280.0
TK-Turkey	53.9	<u>62.2</u>	<u>63.2</u>	<u>55.0</u>	<u>58.0</u>	<u>59.0</u>	290.0	290.0	290.0
Total/Average ERMCO	208.5	207.0	208.6	52.7	53.8	53.4	290.6	287.2	287.9
Russia	<u>65.0</u>	<u>66.0</u>	<u>68.5</u>	30.0	30.0	47.3	370.0	370.0	350.0
USA	<u>79.0</u>	<u>82.0</u>	<u>82.0</u>	73.0	73.0	73.0	270.0	270.0	270.0
Japan	<u>44.3</u>	<u>47.0</u>	<u>47.0</u>	71.8	72.4	72.4	339.0	343.0	343.0

Country	Total cem.consumption Yearly % change		% cement to ready-mix Yearly % change		Average cement content Yearly % change		
	2013 vs 2012	2014 vs 2013	2013 vs 2012	2014 vs 2013	2013 vs 2012	2014 vs 2013	
AT-Austria		10.9	0.0	0.0	0.0	0.0	
BE-Belgium		-9.1	1.7	0.0	<u>0.0</u>	1.9	3.6
CZ-Czech Republic		-5.9	3.1	0.0	<u>0.0</u>	-1.1	0.7
DK-Denmark		-2.3	7.7	7.1	<u>2.2</u>	-2.5	0.0
FI-Finland		-5.6	0.0	4.0	1.9	0.0	0.0
FR-France		-4.0	-5.2	1.9	0.8	-2.7	0.3
Germany		-0.7	2.3	1.8	-2.1	-0.7	-0.7
IE-Ireland		-15.4	9.1	0.0	<u>0.0</u>	0.0	0.0
IT-Italy		-15.2	-7.4	3.7	-13.4	-1.6	1.6
NL-Netherlands		-4.5	-2.4	-3.8	-4.0	-0.7	4.0
PL-Poland		-7.6	6.2	0.0	5.1	-3.2	-1.4
PT-Portugal		-20.5	-7.1	-10.0	27.8	0.0	4.8
SK-Slovakia		0.0	0.0	-4.8	0.0	-1.6	-1.0
ES-Spain		-21.3	0.9	-7.3	-2.4	-0.4	-1.1
SE-Sweden		-4.3	0.0	-	-	-	-
UK-United Kingdom		-1.0	13.5	0.0	-2.7	0.0	4.0
Average EU		-7.6	0.3	-0.6	-2.3	-1.8	0.4
IL-Israel		11.3	1.7	4.2	0.0	0.0	0.0
NO-Norway		3.1	0.0	-1.2	0.0	-1.0	0.0
CH-Switzerland		6.0	1.9	-1.5	0.0	0.0	0.0
TK-Turkey		15.4	1.6	5.5	<u>1.7</u>	0.0	0.0
Average ERMCO		-0.7	0.8	2.1	-0.7	-1.2	0.2
Russia		1.5	3.8	0.0	57.7	0.0	-5.4
USA		3.8	0.0	0.0	0.0	0.0	0.0
Japan		6.1	0.0	0.8	0.0	1.2	0.0

Legend: data in bold are estimated; data undelined source: CEMBUREAU

FA = Fly Ash; SF = Silica Fume; GGBS = Ground Granulated Blastfurnace Slag; MS = MicroSilica;

Concrete production and Cement consumption



Yearly percentage variation

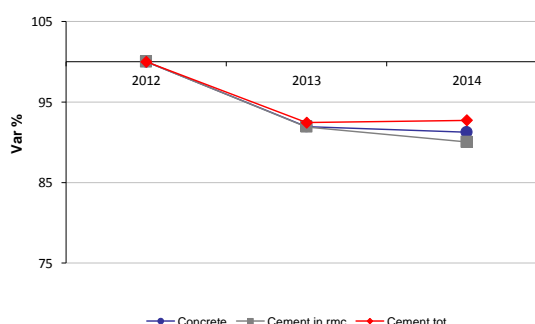


TABLE 2b
Materials-Additions

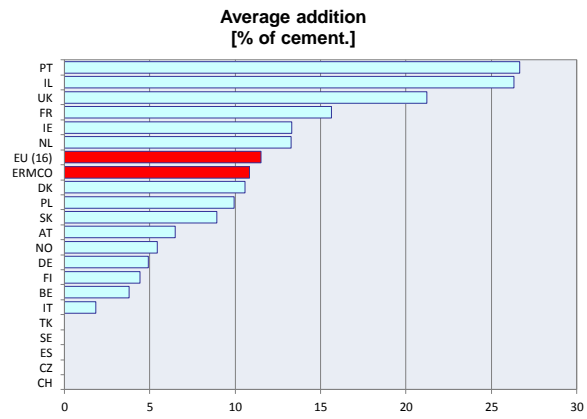
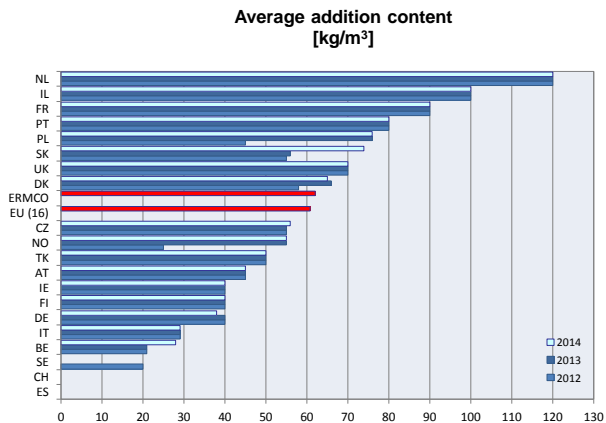
Country	Most used additions			Total additions consumption			Average addition content			k-value	Average total cementitious kg/m ³	Average addition % of cement.
	type			millions of tons			kg/m ³					
	2012	2013	2014	2012	2013	2014	2012	2013	2014			
AT-Austria	FA-GGBS	FA-GGBS	FA-GGBS	0.70	0.70	0.70	45.0	45.0	45.0	0.4	278.0	6.5
BE-Belgium	-	-	-	0.02	0.02	0.03	21.0	21.0	28.0	0.4	296.2	3.8
CZ-Czech Republic	FA	FA	FA	0.32	0.30	0.30	55.0	55.0	56.0	-	-	-
DK-Denmark	FA	FA	FA	0.18	0.19	0.19	58.0	66.0	65.0	0.5	307.5	10.6
FI-Finland	FA	FA	FA	0.10	0.10	0.10	40.0	40.0	40.0	0.4	361.0	4.4
FR-France	FA	FA	FA	0.60	0.60	0.60	90.0	90.0	90.0	0.6	345.0	15.7
DE-Germany	FA	FA	FA	2.00	1.97	1.77	40.0	40.0	38.0	0.4	309.2	4.9
IE-Ireland	GGBS	GGBS	GGBS	0.10	0.10	0.10	40.0	40.0	40.0	1.0	300.0	13.3
IT-Italy	FA	FA	FA	0.15	0.15	0.15	29.0	29.0	29.0	0.2	315.8	1.8
NL-Netherlands	-	-	-	0.45	0.41	0.43	120.0	120.0	120.0	0.4	361.0	13.3
PL-Poland	FA	FA	FA	0.66	1.37	1.42	45.0	76.0	76.0	0.4	305.4	10.0
PT-Portugal	FA	FA	FA	0.30	0.20	0.20	80.0	80.0	80.0	1.0	300.0	26.7
SK-Slovakia	FA	FA	FA	0.23	0.21	0.21	55.0	56.0	74.0	0.4	331.6	8.9
ES-Spain	FA	-	-	-	-	-	-	-	-	-	-	-
SE-Sweden	FA	-	-	0.02	-	-	20.0	-	-	0.4	-	-
UK-United Kingdom	GGBS	GGBS	GGBS	1.28	1.51	1.70	70.0	70.0	70.0	1.0	330.0	21.2
Total/Average EU	-	-	-	7.11	7.83	7.90	53.9	59.1	60.8	N.A.	318.5	10.9
IL-Israel	-	-	-	0.50	0.60	0.60	100.0	100.0	100.0	1.0	380.0	26.3
NO-Norway	FA	FA	FA	0.02	0.03	0.03	25.0	55.0	55.0	0.4	404.0	5.4
CH-Switzerland	-	-	-	-	-	-	-	-	-	-	-	-
TK-Turkey	FA,GGBS	FA-GGBS	FA, GGBS	1.50	2.00	2.00	50.0	50.0	50.0	-	-	-
Total/Average ERMCO	-	-	-	9.13	10.46	10.53	54.6	60.8	62.1	N.A.	328.3	11.5
Russia	SF	MS FA	GGBS,FA,M	0.10	0.50	2.00	40.0	40.0	40.0	-	-	-
USA	FA	FA	FA	13.00	14.00	14.00	75.0	75.0	75.0	1.0	345.0	21.7
Japan	GGBS	GGBS	GGBS	2.20	8.78	8.78	-	-	-	-	-	-

Country	Empty column	Total additions consumption		Average addition content	
		Yearly % change		Yearly % change	
		2013 vs 2012	2014 vs 2013	2013 vs 2012	2014 vs 2013
AT-Austria		0.0	0.0	0.0	0.0
BE-Belgium		0.0	50.0	0.0	33.3
CZ-Czech Republic		-6.3	0.0	0.0	1.8
DK-Denmark		5.6	0.0	13.8	-1.5
FI-Finland		0.0	0.0	0.0	0.0
FR-France		0.0	0.0	0.0	0.0
DE-Germany		-1.5	-10.2	0.0	-5.0
IE-Ireland		0.0	0.0	0.0	0.0
IT-Italy		0.0	0.0	0.0	0.0
NL-Netherlands		-8.9	4.9	0.0	0.0
PL-Poland		107.6	3.6	68.9	0.0
PT-Portugal		-33.3	0.0	0.0	0.0
SK-Slovakia		-8.7	0.0	1.8	32.1
ES-Spain		-	-	-	-
SE-Sweden		-	-	-	-
UK-United Kingdom		18.0	12.6	0.0	0.0
Average EU		10.1	0.9	9.8	2.8
IL-Israel		20.0	0.0	0.0	0.0
NO-Norway		25.0	0.0	120.0	0.0
CH-Switzerland		-	-	-	-
TK-Turkey		33.3	0.0	0.0	0.0
Average ERMCO		14.5	0.7	11.3	2.2
Russia		400.0	300.0	0.0	0.0
USA		7.7	0.0	0.0	0.0
Japan		299.1	0.0	-	-

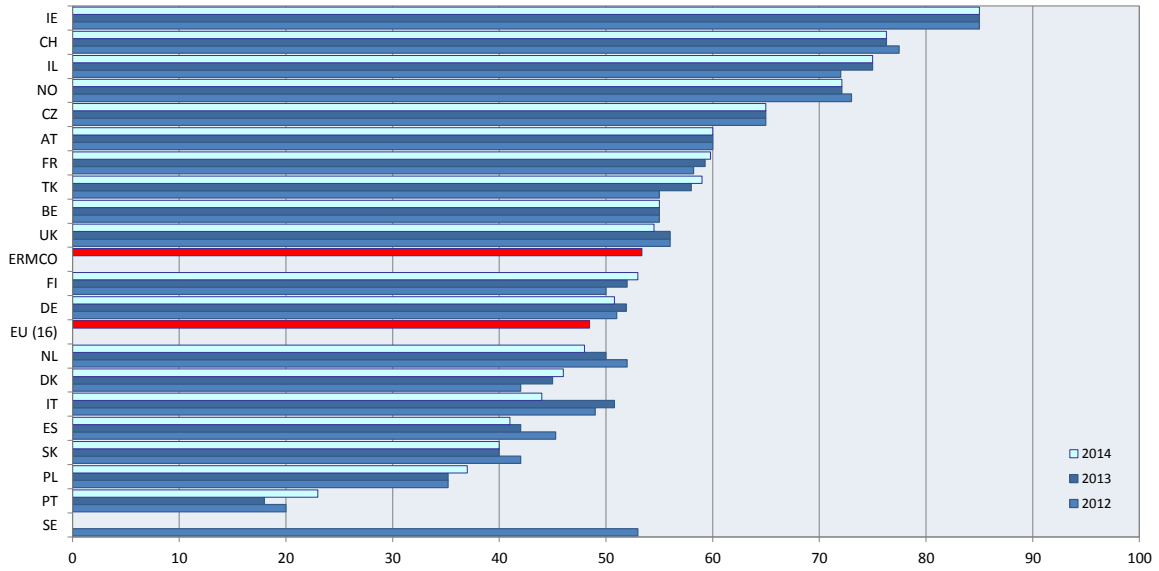
Legend: data in bold are estimated

FA = Fly Ash; SF = Silica Fume; GGBS = Ground Granulated Blastfurnace Slag; MS = MicroSilica;

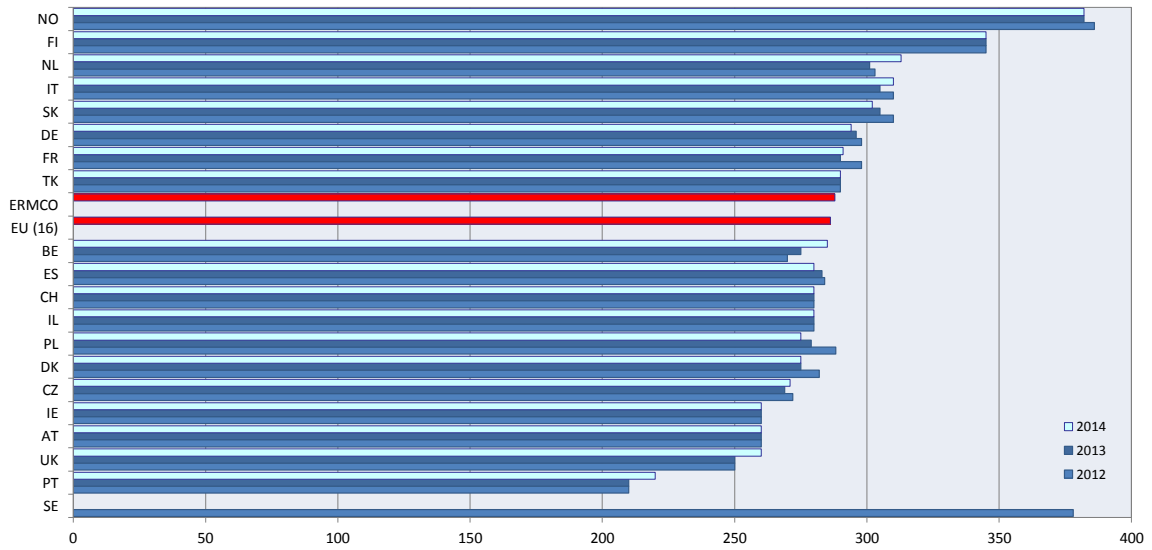
Note: Countries with apparent k-value of 1 means other methods of using additions (e.g. equivalent performance)



**Percentage cement to rmc
[%]**



**Average cement content
[kg/m³]**



**Average addition content
[kg/m³]**

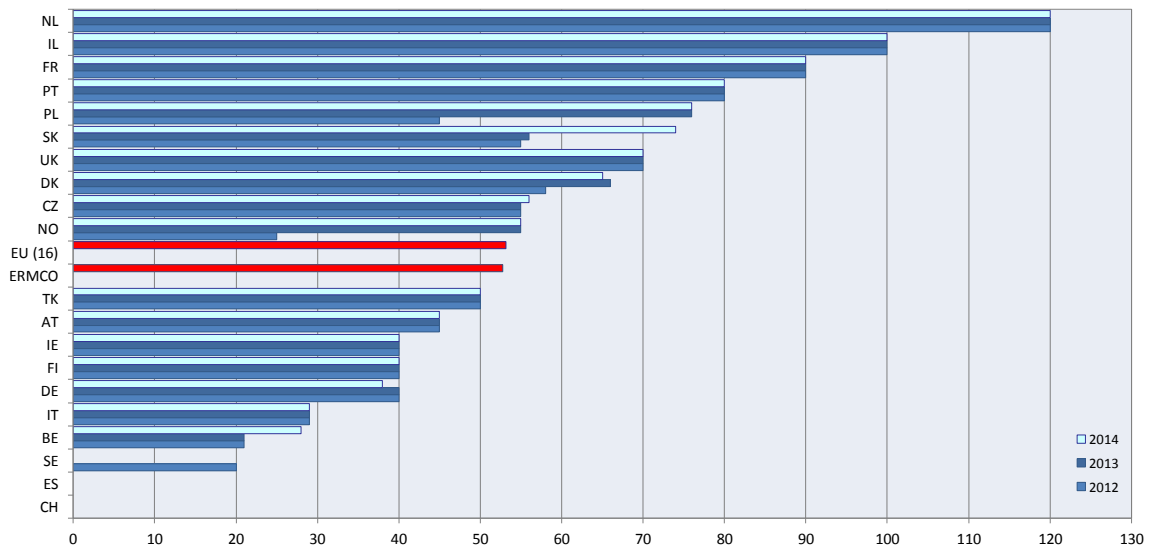


TABLE 3
Product characteristics

Country	% Production by strength class Strength (N/mm ²)								% Production by consistence class Slump class								Prod. special concrete % of total ready-mix	
	< C16/20		C16/20-C20/25		C25/30-C30/37		≥ C35/45		S1		S2 - S3		S4 - S5		SCC		pavement concrete	other
	2013	2014	2013	2014	2013	2014	2013	2014	2013	2014	2013	2014	2013	2014	2013	2014		
AT-Austria	9,6	8,6	17,1	18,8	68,8	67,0	4,5	5,6	6,2	7,1	63,4	68,4	28,2	22,3	2,2	2,2	3,7	1,0
BE-Belgium	0,0	2,0	8,0	10,0	60,0	54,0	32,0	34,0	10,0	8,0	44,0	43,0	45,0	47,0	1,0	2,0	-	5
CZ-Czech Republic	16,0	17,0	31,0	28,0	34,0	34,0	19,0	21,0	21,0	21,0	60,0	56,0	17,0	20,0	2,0	3,0	-	-
DK-Denmark	6,0	6,0	35,0	35,0	35,0	35,0	24,0	24,0	5,0	5,0	45,0	45,0	20,0	20,0	30,0	30,0	0,0	8,0
FI-Finland	3,0	3,0	20,0	20,0	67,0	67,0	10,0	10,0	3,0	3,0	48,0	47,0	48,0	49,0	1,0	1,0	0,0	0,0
FR-France	1,0	1,0	29,0	24,0	59,0	63,0	11,0	12,0	10,0	9,0	69,0	66,0	15,0	19,0	6,0	6,0	6,0	3,0
DE-Germany	7,0	8,4	22,0	18,6	56,0	54,6	15,0	18,4	<u>9,0</u>	<u>12,2</u>	<u>77,0</u>	<u>73,1</u>	13,0	<u>13,5</u>	1,0	<u>1,2</u>	1,0	1,0
IE-Ireland	8,0	8,0	20,0	20,0	38,0	38,0	34,0	34,0	17,0	17,0	68,0	68,0	14,0	14,0	1,0	1,0	-	-
IT-Italy	7,0	7,0	21,0	19,0	68,0	70,0	4,0	4,0	0,0	0,0	11,0	11,0	88,0	88,0	1,0	1,0	0,5	6,0
NL-Netherlands	1,0	1,0	48,0	48,0	34,0	36,0	17,0	15,0	0,0	2,0	59,0	52,0	39,0	44,0	2,0	2,0	4,0	0,5
PL-Poland	11,0	10,0	22,0	20,0	54,0	60,0	13,0	10,0	5,3	5,0	76,0	74,0	18,3	20,0	0,4	1,0	1,0	0
PT-Portugal	5,0	5,0	40,0	40,0	50,0	50,0	5,0	5,0	0,0	0,0	85,0	88,0	15,0	12,0	0,0	0,0	-	-
SK-Slovakia	17,0	19,0	23,0	22,0	41,0	49,0	19,0	10,0	6,0	27,0	52,0	42,0	42,0	30,0	0,0	1,0	4,0	0,0
ES-Spain	8,0	8,0	5,0	5,0	80,0	81,0	7,0	6,0	2,0	2,0	5,0	5,0	92,0	92,0	1,0	1,0	0,0	0,0
SE-Sweden	-	-	-	-	-	-	-	-	-	-	-	-	-	-	-	-	-	-
UK-United Kingdom	11,0	11,0	25,0	25,0	54,0	54,0	10,0	10,0	10,0	10,0	71,0	71,0	17,0	17,0	2,0	2,0	1,0	0,0
Average EU	6,5	7,0	22,4	20,5	58,8	59,4	12,3	13,1	7,0	7,8	55,5	54,9	35,2	34,8	2,3	2,5	1,9	2,0
IL-Israel	-	-	-	-	-	-	-	-	0,0	0,0	2,0	2,0	95,0	95,0	3,0	3,0	0,0	15,0
NO-Norway	0,0	0,0	1,0	1,0	52,0	52,0	47,0	47,0	1,0	1,0	0,0	0,0	95,0	95,0	4,0	4,0	0,0	0,0
CH-Switzerland	-	-	-	-	-	-	-	-	-	-	-	-	-	-	-	-	-	-
TK-Turkey	1,0	1,0	12,0	10,0	72,0	73,0	15,0	16,0	1,0	1,0	56,0	54,0	42,0	44,0	1,0	1,0	-	-
Average ERMCO	4,7	4,9	18,9	16,9	62,9	63,8	13,5	14,4	5,0	5,5	55,0	54,0	38,1	38,5	1,9	2,0	0,0	7,5
Russia	5,0	5,0	40,0	40,0	40,0	40,0	15,0	15,0	5,0	5,0	9,0	9,0	85,0	85,0	1,0	1,0	5,0	2,0
USA	40,0	40,0	25,0	25,0	25,0	25,0	10,0	10,0	-	-	-	-	-	-	1,0	1,0	12,0	-
Japan	0,0	0,0	34,0	34,0	50,0	50,0	16,0	16,0	0,0	0,0	30,0	30,0	66,0	66,0	4,0	4,0	9,0	0,0

Legend: data in bold are estimated
data underscored are where flow table classes have been converted to consistence classes: (S1=F1, S2-S3=F2-F3 ecc.)

Production by strength class



Production by consistency class

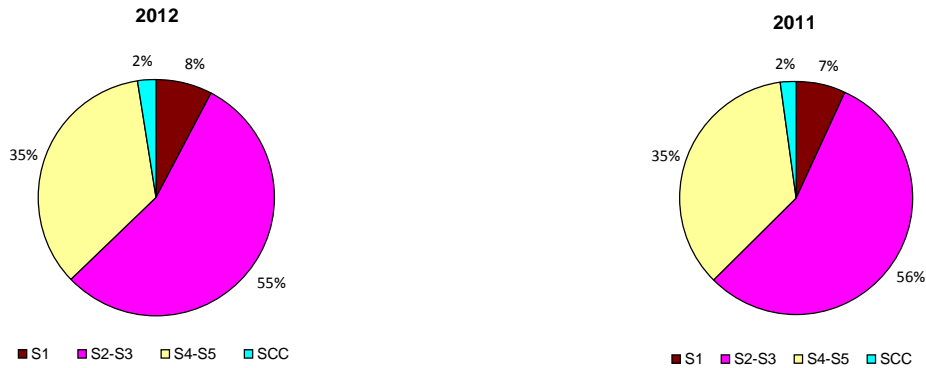


TABLE 4
Overall data and trend comparison

Country	Concrete production ¹ millions of m ³			Cement consumption ¹ millions of tons			Gross Domestic Product ² millions of €		
	2012	2013	2014	2012	2013	2014	2012	2013	2014
AT-Austria	15.0	15.0	14.3	4.6	5.1	5.1	279478	280376	281367
BE-Belgium	23.7	22.5	21.4	<u>6.6</u>	<u>6.0</u>	<u>6.1</u>	337119	338101	341707
CZ-Czech Republic	10.6	10.0	10.0	<u>3.4</u>	<u>3.2</u>	<u>3.3</u>	155486	152310	152310
DK-Denmark	4.0	4.2	4.3	1.3	1.3	1.4	240452	244535	244535
FI-Finland	4.1	3.9	3.9	1.8	1.7	1.7	189489	194469	194469
FR-France	55.0	54.0	51.0	20.0	19.2	18.2	2001398	2032296	2032296
DE-Germany	67.9	67.2	77.4	26.7	26.5	27.1	2592600	2644200	2644200
IE-Ireland	2.8	2.8	2.8	<u>1.3</u>	<u>1.1</u>	<u>1.2</u>	161037	163595	163595
IT-Italy	58.7	46.6	40.0	25.6	21.7	20.1	1578497	1565916	1565916
NL-Netherlands	14.2	11.8	11.6	4.4	4.2	4.1	601973	600638	600638
PL-Poland	34.8	32.1	33.7	15.7	14.5	15.4	369665	381213	381213
PT-Portugal	7.0	5.5	5.5	3.5	2.8	2.6	171064	165409	165409
SK-Slovakia	2.4	2.2	2.1	1.8	1.8	1.8	69108	71463	71463
ES-Spain	40.0	32.0	31.0	13.6	10.7	10.8	1063355	1049525	1049525
SE-Sweden	5.0	-	-	2.3	2.2	2.2	387596	408467	408467
UK-United Kingdom	28.0	28.2	37.0	9.7	9.6	10.9	1746587	1901001	1901001
Total/Average EU	373.2	338.0	346.0	142.4	131.6	132.0	11944904	12193514	12198111
IL-Israel	13.0	14.5	14.5	5.3	5.9	6.0	714000	802000	802000
NO-Norway	5.1	5.0	5.0	1.9	2.0	2.0	269764	271767	277769
CH-Switzerland	12.1	-	-	<u>5.0</u>	<u>5.3</u>	<u>5.4</u>	376605	383819	383819
TK-Turkey	104.0	115.0	121.0	<u>53.9</u>	<u>62.2</u>	<u>63.2</u>	555100	612412	612412
Total/Average ERMCO	507.4	472.5	486.5	208.5	207.0	208.6	13860374	14263511	14274110
Russia	70.0	76.0	72.0	65.0	66.0	68.5	949530	949530	949530
USA	310.0	330.0	330.0	79.0	82.0	82.0	10830244	12207971	12207971
Japan	128.0	138.0	138.0	44.3	47.0	47.0	4240808	4642324	4642324

Legend: data in bold are estimated; data undelined source: CEMBUREAU

(1) Site mixed and precast included.

(2) Source EUROSTAT: <http://ec.europa.eu/eurostat>.

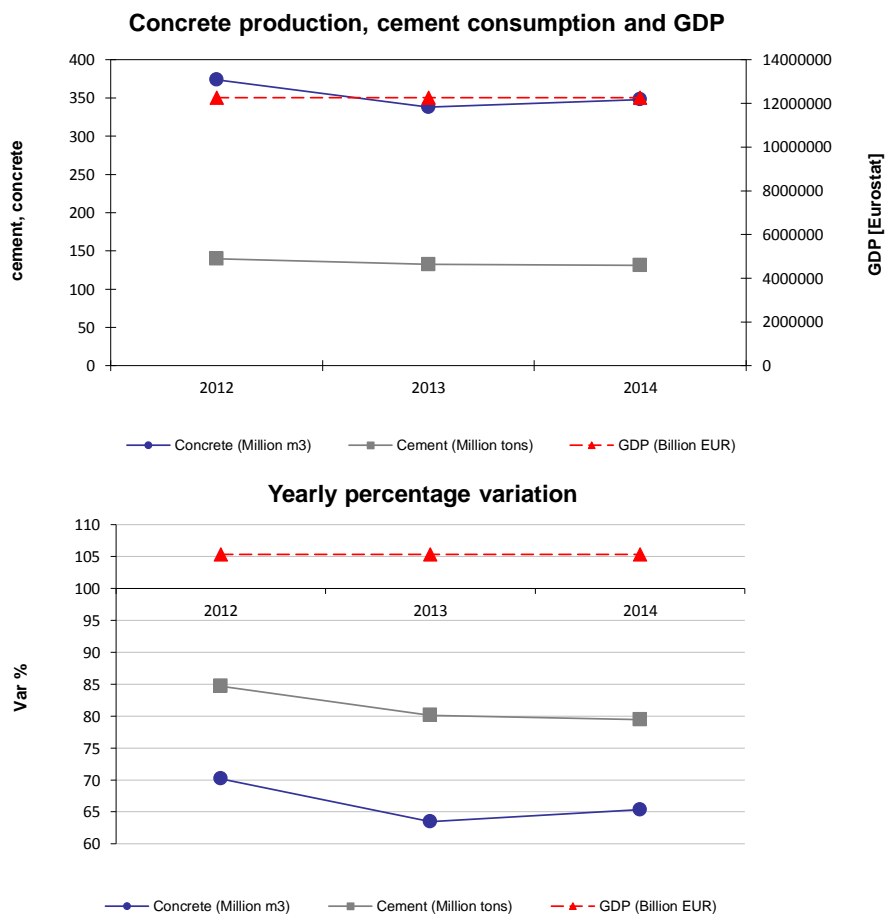


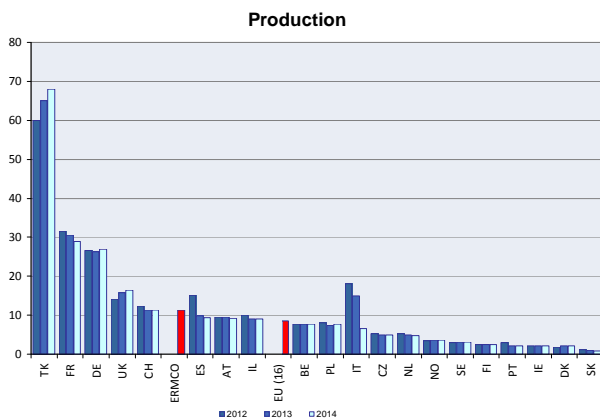
TABLE 5
Industry organization (ERMCO Members only)

Country	Production millions m ³			Producers			Plants			Employees			Turnover incl. delivery excluding tax - mio €		
	2012	2013	2014	2012	2013	2014	2012	2013	2014	2012	2013	2014	2012	2013	2014
AT-Austria	9,6	9,5	9,2	123	121	121	216	216	221	2000	2100	2100	672	680	660
BE-Belgium	7,8	7,7	7,8	53	57	59	125	123	125	1950	1900	1900	515	490	510
CZ-Czech Republic	5,2	5,0	5,0	9	9	9	287	287	284	1752	1696	1629	353	309	306
DK-Denmark	1,8	2,1	2,1	13	13	13	80	79	79	680	760	770	-	-	-
FI-Finland	2,4	2,4	2,4	28	26	26	137	139	140	1050	1000	980	268	270	267
FR-France	31,5	30,5	28,9	186	170	179	1386	1383	1373	11570	11500	10850	3020	3100	3000
DE-Germany	26,6	26,3	27,0	319	312	300	1250	1200	860	5430	5418	5550	1776	1800	1894
IE-Ireland	2,1	2,1	2,1	69	69	69	190	185	185	3000	3000	3000	138	138	138
IT-Italy	18,0	15,0	6,5	209	180	134	677	685	547	4170	4100	2037	1100	930	400
NL-Netherlands	5,3	5,0	4,8	23	21	18	127	125	120	1300	1100	1000	440	-	-
PL-Poland	8,0	7,4	7,8	25	26	27	220	235	239	1986	1867	1867	403	375	395
PT-Portugal	2,9	2,2	2,2	19	18	17	145	138	130	800	750	700	150	120	120
SK-Slovakia	1,1	1,0	0,8	10	6	5	81	59	46	474	358	292	68	52	46
ES-Spain	15,1	9,9	9,3	309	268	246	1057	992	639	6500	4500	3500	785	-	-
SE-Sweden	2,9	3,1	3,2	26	26	26	158	-	-	2600	-	-	-	-	-
UK-United Kingdom	14,2	15,8	16,4	16	16	16	820	789	777	5770	5600	5600	1420	1392	1450
Total	154,5	144,9	135,5	1437	1338	1265	6956	6635	5765	51032	45649	41775	11108	9656	9186
IL-Israel	10,0	9,1	9,1	10	11	11	100	103	103	893	900	900	570	600	600
NO-Norway	3,5	3,6	3,6	92	95	95	170	169	169	1880	1880	1880	519	505	505
CH-Switzerland	12,3	11,4	11,4	189	189	189	373	372	372	-	-	-	-	-	-
TK-Turkey	60,0	65,0	68,0	85	85	87	380	405	420	15000	16500	17600	2100	2350	2500
Total	240,3	234,0	227,6	1813	1718	1647	7979	7684	6829	68805	64929	62155	14297	13111	12791
Russia	5,0	6,0	5,0	45	50	62	55	60	190	1000	1100	2000	110	120	100
USA	140,0	115,0	115,0	1300	1350	1350	4000	4800	4800	75000	47500	47500	14000	11000	11000
Japan	80,0	86,0	86,0	2774	2747	2747	2995	2966	2966	33434	33155	33155	98550	8104	8104

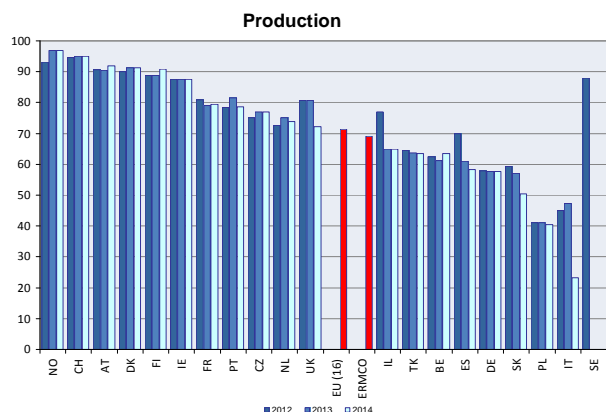
Country	Production			Producers			Plants			Employees			Turnover including delivery		
	Members vs Country - %			Members vs Country - %			Members vs Country - %			Members vs Country - %			Members vs Country - %		
	2012	2013	2014	2012	2013	2014	2012	2013	2014	2012	2013	2014	2012	2013	2014
AT-Austria	90,6	90,5	92,0	87,9	87,7	89,6	91,1	90,0	92,1	88,9	89,4	91,3	91,4	90,7	91,7
BE-Belgium	62,4	61,2	63,4	32,5	34,5	35,8	48,1	49,2	51,0	50,0	50,0	50,0	65,2	64,8	63,4
CZ-Czech Republic	75,0	76,9	76,9	31,0	31,0	31,0	63,8	63,8	63,1	75,0	73,7	72,4	74,9	77,3	78,5
DK-Denmark	90,0	91,3	91,3	52,0	52,0	52,0	85,1	83,2	82,3	94,4	89,4	89,5	-	-	-
FI-Finland	88,9	88,9	90,9	30,1	28,6	28,6	69,2	69,2	69,3	91,3	87,0	86,7	97,5	97,1	97,4
FR-France	81,0	79,0	79,4	34,4	32,1	33,4	74,2	73,5	73,6	82,3	82,1	78,7	78,9	79,5	78,9
DE-Germany	57,8	57,7	57,7	52,6	51,5	50,0	64,4	62,1	45,7	36,0	35,7	35,7	59,0	59,3	59,3
IE-Ireland	87,5	87,5	87,5	86,3	86,3	86,3	92,7	92,5	92,5	85,7	85,7	85,7	85,7	85,7	85,7
IT-Italy	45,1	47,3	23,2	16,4	14,6	10,3	29,8	31,1	23,0	28,0	30,3	23,0	38,3	40,7	19,8
NL-Netherlands	72,6	75,0	73,8	46,0	-	-	70,6	70,2	68,2	70,3	68,8	66,7	71,5	-	-
PL-Poland	41,0	41,1	40,5	4,5	4,9	5,1	24,2	26,1	26,3	22,1	22,0	22,0	40,1	40,0	40,4
PT-Portugal	78,4	81,5	78,6	22,9	22,5	23,0	53,7	61,3	56,5	34,8	37,5	38,9	85,7	85,7	85,7
SK-Slovakia	59,3	57,1	50,4	6,5	4,0	3,3	30,0	24,6	19,6	55,8	44,8	36,5	63,2	59,5	53,2
ES-Spain	70,0	61,0	58,4	32,6	26,9	24,6	49,8	50,1	43,4	68,4	64,3	63,6	72,8	-	-
SE-Sweden	87,9	-	-	68,4	-	-	79,8	-	-	-	-	-	-	-	-
UK-United Kingdom	80,7	80,6	72,2	8,0	7,3	7,3	86,3	71,6	74,9	84,9	78,2	78,2	91,0	80,0	79,2
Average EU	73,0	71,8	69,1	38,3	34,6	34,3	63,3	61,2	58,8	64,5	62,6	61,3	72,5	71,7	69,4
IL-Israel	76,9	65,0	65,0	19,2	22,4	22,4	58,8	56,6	56,6	60,7	60,0	60,0	77,0	66,4	66,4
NO-Norway	93,2	96,8	96,8	69,2	78,5	78,5	79,8	80,5	80,5	87,4	87,4	87,4	93,0	96,6	96,6
CH-Switzerland	94,6	95,0	95,0	-	-	-	-	-	-	-	-	-	-	-	-
TK-Turkey	64,5	63,7	63,6	15,7	15,2	15,0	38,8	40,1	40,4	53,6	54,1	55,0	64,5	65,3	62,5
Average ERMCO	74,9	73,5	71,4	37,7	35,3	35,1	62,6	60,9	58,8	65,0	63,4	62,3	73,5	72,6	70,6
Russia	11,9	13,6	12,5	10,0	10,0	7,9	2,6	2,7	11,2	4,8	4,8	5,4	2,6	2,7	2,5
USA	62,2	50,0	50,0	52,0	54,0	54,0	72,7	68,6	68,6	62,5	50,0	50,0	66,7	50,0	50,0
Japan	87,0	86,9	86,9	80,1	80,4	80,4	78,9	79,2	79,2	86,1	86,9	86,9	87,7	86,9	86,9

Legend: data in bold are estimated

ERMCO Members

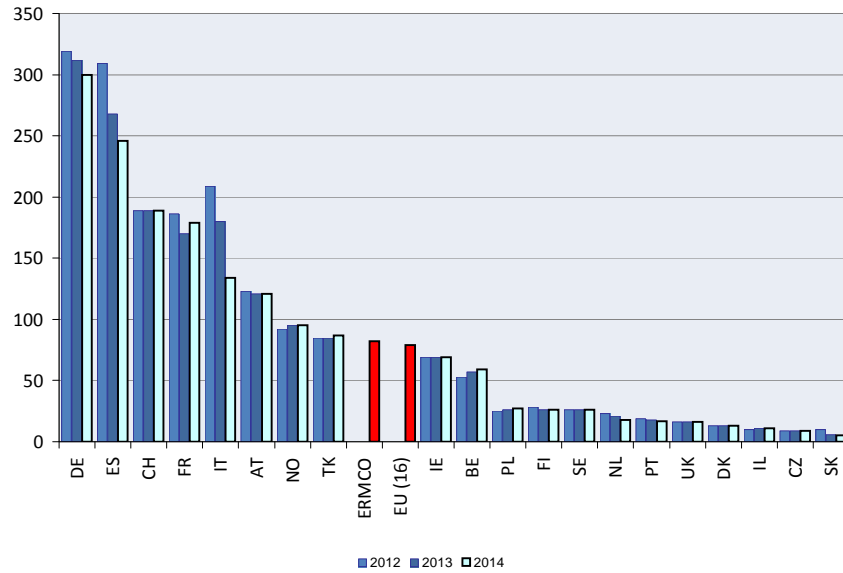


Members vs Country %



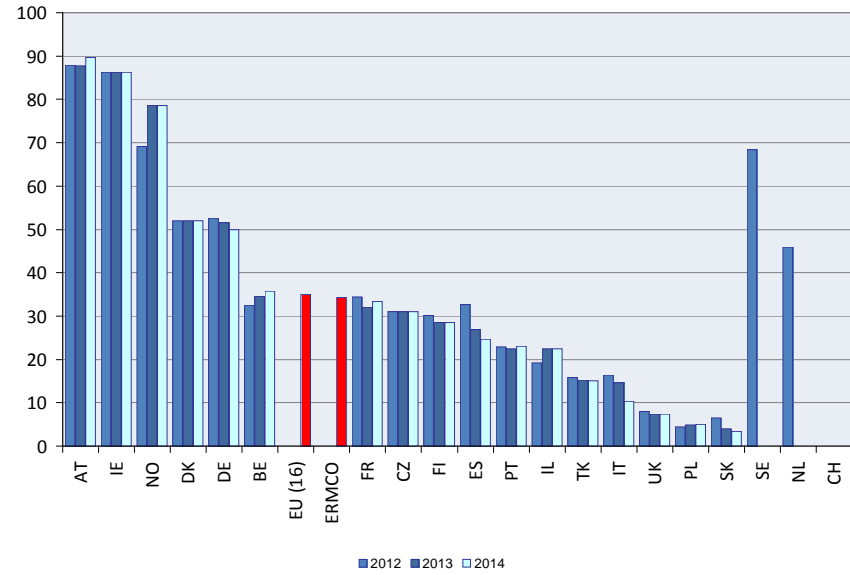
ERMCO Members

Producers

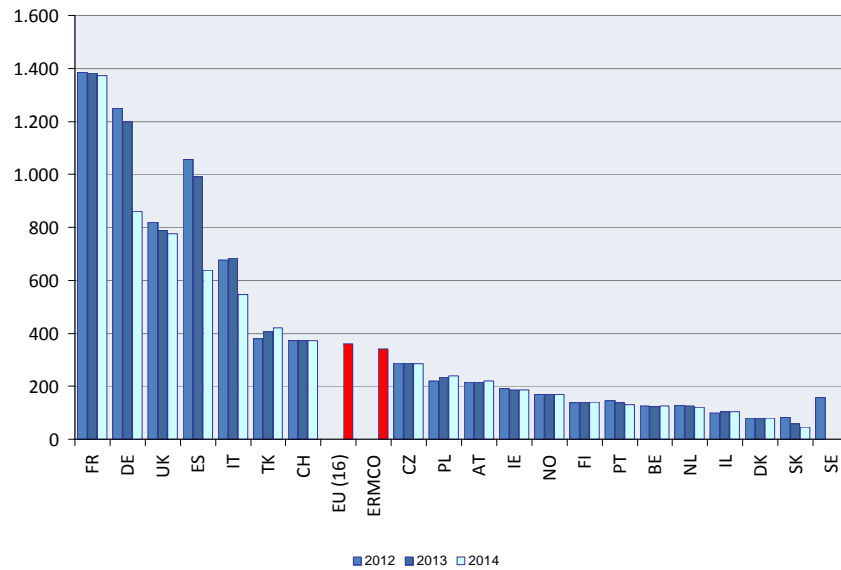


Members vs Country [%]

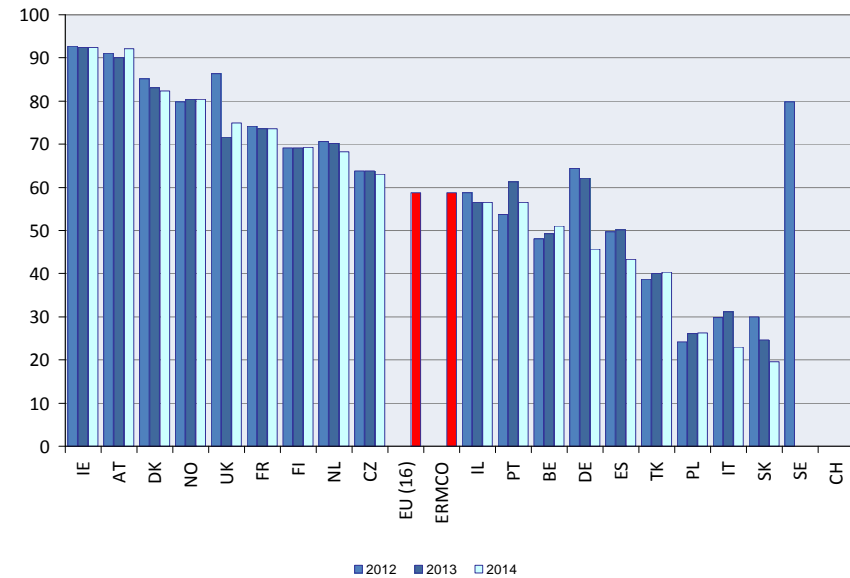
Producers



Plants

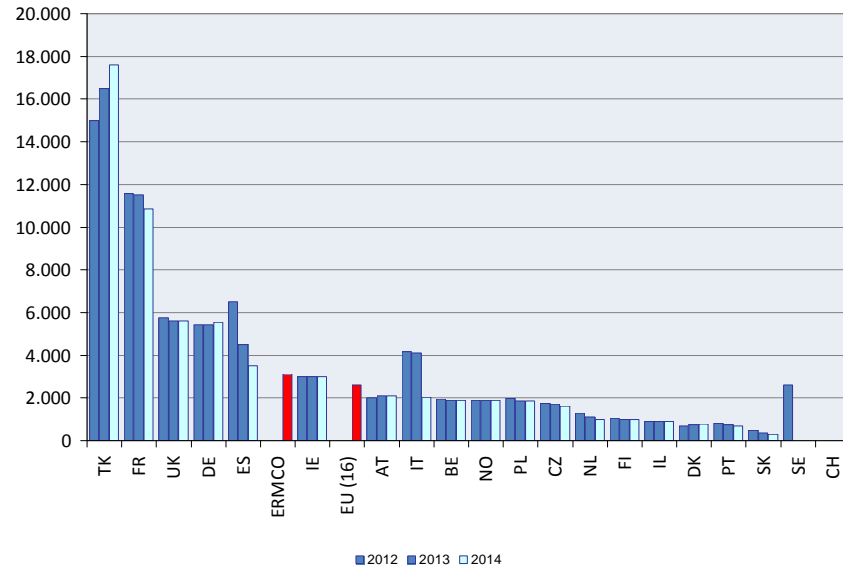


Plants



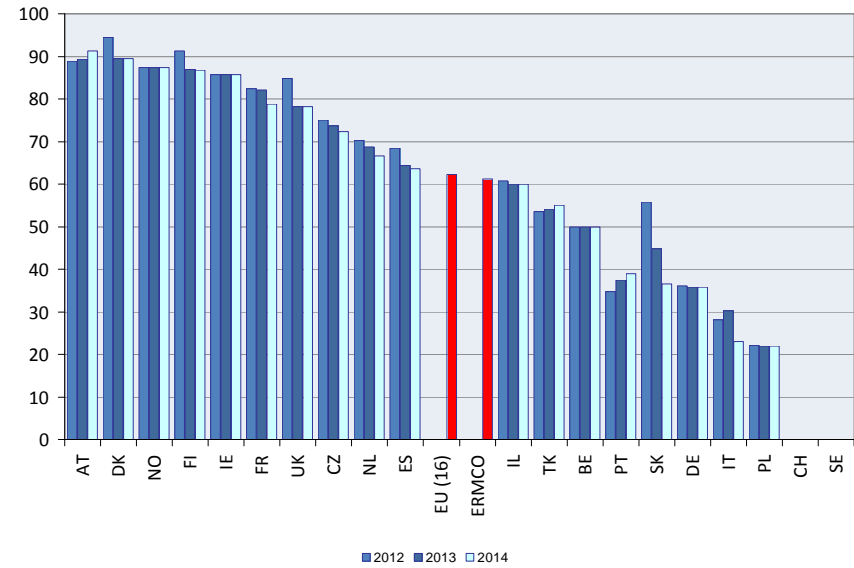
ERMCO Members

Employees

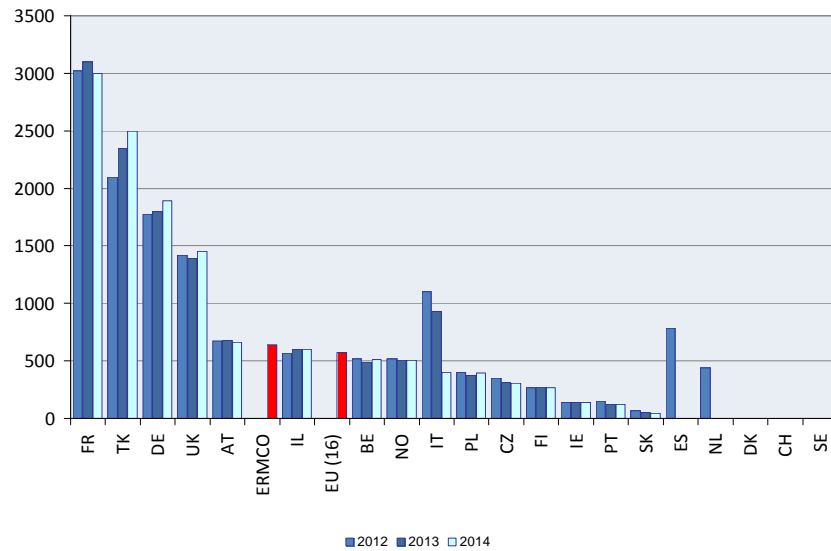


Members vs Country [%]

Employees



Turnover



Turnover

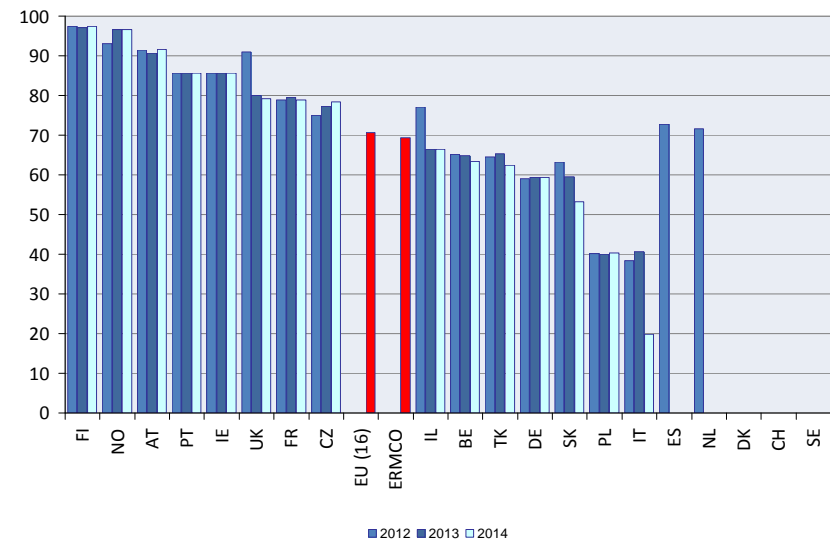


TABLE 6
Product development (ERMCO Members only)

Country	Production millions of m ³			Method of Production % of total				Average production per plant - x1000 m ³			Pumped Concrete % of total		
	2012	2013	2014	Central 2013	Mixing 2014	Dry Batching 2013	2014	2012	2013	2014	2012	2013	2014
AT-Austria	9,6	9,5	9,2	100,0	100,0	0,0	0,0	44,4	44,0	41,6	50,0	52,0	54,0
BE-Belgium	7,8	7,7	7,8	100,0	100,0	0,0	0,0	62,4	62,2	62,4	38,0	45,0	47,0
CZ-Czech Republic	5,2	5,0	5,0	96,0	97,0	4,0	3,0	18,1	17,4	17,6	35,0	34,0	33,0
DK-Denmark	1,8	2,1	2,1	99,0	99,0	1,0	1,0	22,5	26,6	26,6	24,0	24,0	26,0
FI-Finland	2,4	2,4	2,4	100,0	100,0	0,0	0,0	17,5	17,3	17,1	75,0	76,0	75,0
FR-France	31,5	30,5	28,9	100,0	100,0	0,0	0,0	22,7	22,1	21,0	20,0	20,0	20,0
DE-Germany	26,6	26,3	27,0	100,0	100,0	0,0	0,0	21,3	21,9	31,4	41,0	40,0	41,5
IE-Ireland	2,1	2,1	2,1	60,0	60,0	40,0	40,0	11,1	11,4	11,4	15,0	15,0	15,0
IT-Italy	18,0	15,0	6,5	2,0	13,0	98,0	87,0	26,6	21,9	11,9	58,0	58,0	58,0
NL-Netherlands	5,3	5,0	4,8	98,0	98,0	2,0	2,0	41,7	39,7	39,7	50,0	60,0	65,0
PL-Poland	8,0	7,4	7,8	99,0	99,0	1,0	1,0	36,4	31,5	32,6	55,0	55,0	60,0
PT-Portugal	2,9	2,2	2,2	98,0	98,0	2,0	2,0	20,0	15,9	16,9	60,0	50,0	50,0
SK-Slovakia	1,1	1,0	0,8	100,0	100,0	0,0	0,0	13,8	16,4	17,9	29,0	30,0	29,0
ES-Spain	15,1	9,9	9,3	25,0	30,0	75,0	70,0	14,3	10,0	14,6	40,0	35,0	35,0
SE-Sweden	2,9	3,1	3,2	-	-	-	-	18,4	-	-	48,0	-	-
UK-United Kingdom	14,2	15,8	16,4	40,0	40,0	60,0	60,0	17,3	20,0	21,1	20,0	20,0	20,0
Total/Average EU	154,5	144,9	135,5	75,2	80,5	22,7	17,2	22,2	21,8	23,5	38,3	36,7	36,4
IL-Israel	10,0	9,1	9,1	1,0	1,0	99,0	99,0	100,0	88,3	88,3	55,0	55,0	55,0
NO-Norway	3,5	3,6	3,6	99,0	99,0	1,0	1,0	20,3	21,5	21,5	75,0	75,0	75,0
CH-Switzerland	12,3	11,4	11,4	100,0	100,0	0,0	0,0	33,0	30,6	30,6	20,0	-	-
TK-Turkey	60,0	65,0	68,0	99,0	99,0	1,0	1,0	157,9	160,5	161,9	82,0	75,0	76,0
Total/Average ERMCO	240,3	234,0	227,6	80,5	84,1	18,2	14,5	30,1	30,5	33,3	49,5	46,8	47,8
Russia	5,0	6,0	5,0	95,0	96,0	5,0	4,0	90,9	100,0	26,3	35,0	50,0	65,0
USA	140,0	115,0	115,0	20,0	20,0	80,0	80,0	35,0	24,0	24,0	40,0	40,0	40,0
Japan	80,0	86,0	86,0	100,0	100,0	0,0	0,0	26,7	29,0	29,0	65,0	65,0	65,0

Country	Production Yearly % change		Pumped Concrete Yearly % change		Average production per plant Yearly % change	
	2013 vs 2012	2014 vs 2013	2013 vs 2012	2014 vs 2013	2013 vs 2012	2014 vs 2013
AT-Austria	-1,0	-3,2	2,0	2,0	-1,0	-5,3
BE-Belgium	-1,9	2,0	7,0	2,0	-0,3	0,3
CZ-Czech Republic	-3,7	0,0	-1,0	-1,0	-3,7	1,1
DK-Denmark	16,7	0,0	0,0	2,0	18,1	0,0
FI-Finland	0,0	-0,4	1,0	-1,0	-1,4	-1,1
FR-France	-3,2	-5,2	0,0	0,0	-3,0	-4,6
DE-Germany	-1,1	2,7	-1,0	1,5	3,0	43,2
IE-Ireland	0,0	0,0	0,0	0,0	2,7	0,0
IT-Italy	-16,7	-56,7	0,0	0,0	-17,6	-45,7
NL-Netherlands	-6,4	-4,0	10,0	5,0	-4,9	0,0
PL-Poland	-7,5	5,1	0,0	5,0	-13,4	3,4
PT-Portugal	-24,1	0,0	-10,0	0,0	-20,3	6,2
SK-Slovakia	-13,4	-15,3	1,0	-1,0	18,9	8,7
ES-Spain	-34,2	-6,3	-5,0	0,0	-29,9	45,4
SE-Sweden	6,9	3,2	-	-	-	-
UK-United Kingdom	11,3	3,8	0,0	0,0	15,6	5,4
Average EU	-6,2	-6,5	-1,6	-0,2	-1,7	7,6
IL-Israel	-9,0	0,0	0,0	0,0	-11,7	0,0
NO-Norway	5,2	0,0	0,0	0,0	5,8	0,0
CH-Switzerland	-7,3	0,0	-	-	-7,1	0,0
TK-Turkey	8,3	4,6	-7,0	1,0	1,6	0,9
Average ERMCO	-2,6	-2,8	-2,7	1,0	1,2	9,4
Russia	20,0	-16,7	15,0	15,0	10,0	-73,7
USA	-17,9	0,0	0,0	0,0	-31,5	0,0
Japan	7,5	0,0	0,0	0,0	8,6	0,0

Legend: data in bold are estimated

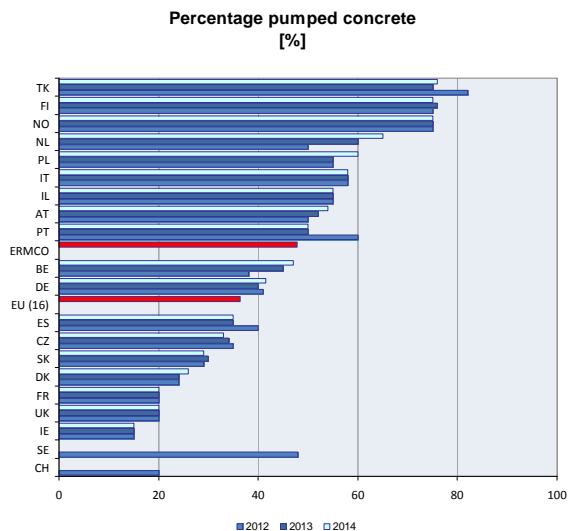
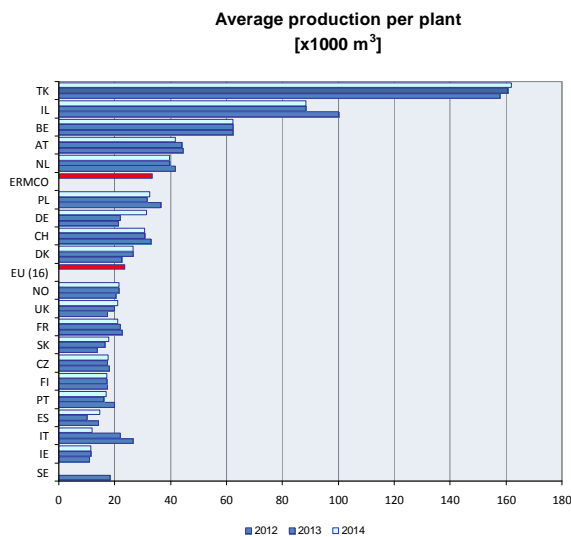
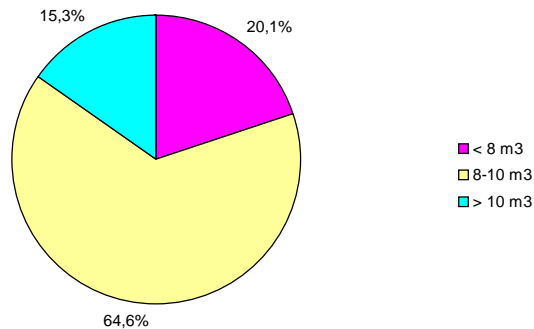


TABLE 7
Delivery method and vehicles (ERMCO members only)

Country	Number of vehicles truck mixers			Vehicles by capacity (2014) %			Number of vehicles pumps			% Delivery method (2014)		
	2012	2013	2014	< 8 m ³	8-10 m ³	> 10 m ³	2012	2013	2014	Company Vehicles	Outside Contractors	Customer Collection
AT-Austria	1800	1770	1730	6	88	6	430	430	430	45	50	5
BE-Belgium	1550	1550	1570	2	53	45	230	225	230	45	29	26
CZ-Czech Republic	402	401	400	49	51	0	113	131	133	36	44	20
DK-Denmark	435	450	450	67	29	4	48	48	50	88	10	2
FI-Finland	470	450	445	94	5	1	300	300	290	18	80	2
FR-France	6350	6340	6050	5	89	6	1780	1800	1750	13	84	3
DE-Germany	7300	6780	6301	5	89	6	1612	1602	1619	30	62	8
IE-Ireland	500	500	500	10	90	0	-	-	-	70	30	0
IT-Italy	11300	10500	8000	6	48	46	2400	2300	2000	12	86	2
NL-Netherlands	1100	1000	950	6	80	14	70	70	70	92	7	1
PL-Poland	3066	3010	2850	10	89	1	720	700	650	30	60	10
PT-Portugal	800	600	600	10	90	0	200	120	120	15	85	0
SK-Slovakia	210	190	180	23	48	29	29	40	40	31	43	26
ES-Spain	4300	3600	3500	70	30	0	-	-	0	30	70	0
SE-Sweden	820	-	-	-	-	-	300	-	-	-	-	-
UK-United Kingdom	2280	2280	2280	92	8	0	0	0	0	15	80	5
Total/Average EU	42683	39421	35806	20	65	15	8232	7766	7382	26	69	5
IL-Israel	1620	1780	1780	12	85	3	350	370	370	40	60	0
NO-Norway	1000	1000	1000	33,0	63,0	4,0	400	400	400	35,0	62,0	3,0
CH-Switzerland	-	-	-	-	-	-	-	-	-	-	-	-
TK-Turkey	11000	12500	13000	2	70	28	3000	3300	3450	72	27	1
Total/Average ERMCO	56303	54701	51586	15	67	18	11982	11836	11602	38	58	4
Russia	5500	-	8500	60	30	10	-	-	-	70	25	5
USA	70000	72000	72000	92	8	0	7500	-	-	98	1	1
Japan	47373	47373	47373	100	0	0	9000	9000	9000	65	35	0

Legend: data in bold are estimated

Vehicles by capacity



Delivery method

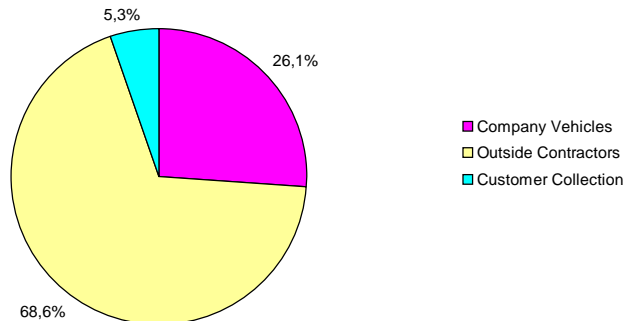


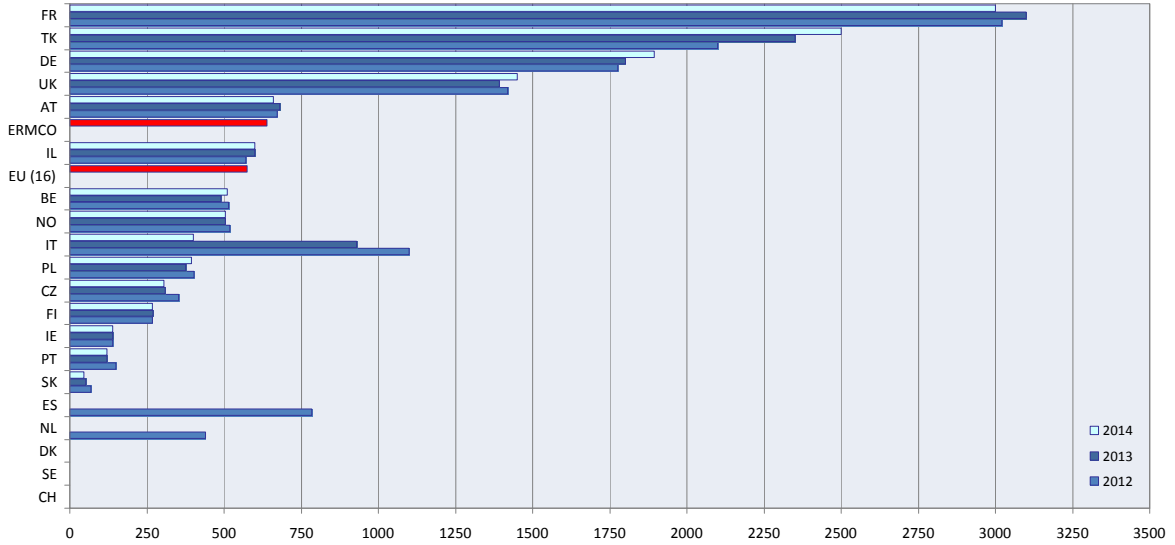
TABLE 8
Sector development (ERMCO members only)

Country	Production millions of m ³			Turnover including delivery excluding tax - millions of €			Employees			Turnover vs Production €/m ³			Turnover vs Employees x1000 € / employee		
	2012	2013	2014	2012	2013	2014	2012	2013	2014	2012	2013	2014	2012	2013	2014
AT-Austria	9,6	9,5	9,2	672	680	660	2000	2100	2100	70,0	71,6	72	336,0	323,8	314,3
BE-Belgium	7,8	7,7	7,8	515	490	510	1950	1900	1900	66,0	64,1	65	264,1	257,9	268,4
CZ-Czech Republic	5,2	5,0	5,0	353	309	306	1752	1696	1629	68,0	61,8	61	201,5	182,2	187,8
DK-Denmark	1,8	2,1	2,1	-	-	-	680	760	770	-	-	-	-	-	-
FI-Finland	2,4	2,4	2,4	268	270	267	1050	1000	980	111,7	112,5	112	255,2	270,0	272,4
FR-France	31,5	30,5	28,9	3020	3100	3000	11570	11500	10850	95,9	101,6	104	261,0	269,6	276,5
DE-Germany	26,6	26,3	27,0	1776	1800	1894	5430	5418	5550	66,8	68,4	70	327,1	332,2	341,3
IE-Ireland	2,1	2,1	2,1	138	138	138	3000	3000	3000	65,7	65,7	66	46,0	46,0	46,0
IT-Italy	18,0	15,0	6,5	1100	930	400	4170	4100	2037	61,1	62,0	62	263,8	226,8	196,4
NL-Netherlands	5,3	5,0	4,8	440	-	-	1300	1100	1000	83,0	-	-	338,5	-	-
PL-Poland	8,0	7,4	7,8	403	375	395	1986	1867	1867	50,4	50,7	51	203,0	200,9	211,6
PT-Portugal	2,9	2,2	2,2	150	120	120	800	750	700	51,7	54,5	55	187,5	160,0	171,4
SK-Slovakia	1,1	1,0	0,8	68	52	46	474	358	292	61,0	53,4	56	144,1	144,7	156,6
ES-Spain	15,1	9,9	9,3	785	-	-	6500	4500	3500	52,0	-	-	120,8	-	-
SE-Sweden	2,9	3,1	3,2	-	-	-	2600	-	-	-	-	-	-	-	-
UK-United Kingdom	14,2	15,8	16,4	1420	1392	1450	5770	5600	5600	100,0	88,1	88	246,1	248,6	258,9
Total/Average EU	154,5	144,9	135,5	11108	9656	9186	51032	45649	41775	71,9	66,6	68	217,7	211,5	219,9
IL-Isreal	10,0	9,1	9,1	570	600	600	893	900	900	57,0	65,9	66	638,3	666,7	666,7
NO-Norway	3,5	3,6	3,6	519	505	505	1880	1880	1880	150,4	139,1	139	276,1	268,6	268,6
CH-Switzerland	12,3	11,4	11,4	-	-	-	-	-	-	-	-	-	-	-	-
TK-Turkey	60,0	65,0	68,0	2100	2350	2500	15000	16500	17600	35,0	36,2	37	140,0	142,4	142,0
Total/Average ERMCO	240,3	234,0	227,6	14297	13111	12791	68805	64929	62155	59,5	56,0	56	207,8	201,9	205,8
Russia	5,0	6,0	5,0	110	120	100	1000	1100	2000	22,0	20,0	20	110,0	109,1	50,0
USA	140,0	115,0	115,0	14000	11000	11000	75000	47500	47500	100,0	95,7	96	186,7	231,6	231,6
Japan	80,0	86,0	86,0	98550	8104	8104	33434	33155	33155	1231,9	94,2	94	2947,6	244,4	244,4

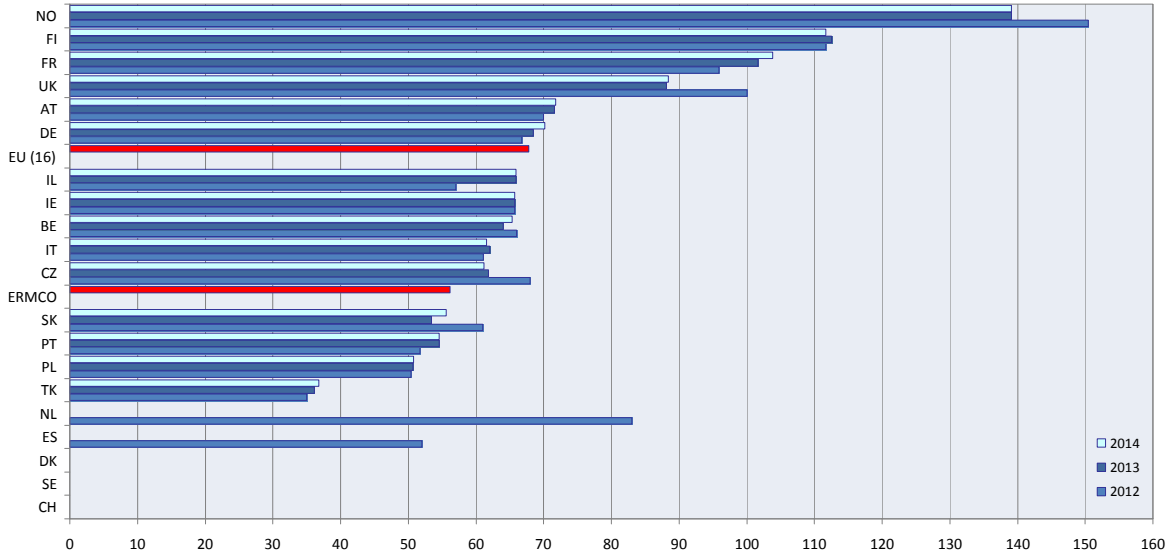
Country	Production Yearly % change		Turnover including delivery Yearly % change		Employees Yearly % change		Turnover vs Production Yearly % change		Turnover vs Employees Yearly % change	
	2013 vs 2012	2014 vs 2013	2013 vs 2012	2014 vs 2013	2013 vs 2012	2014 vs 2013	2013 vs 2012	2014 vs 2013	2013 vs 2012	2014 vs 2013
	AT-Austria	-1,0	-3,2	1,2	-2,9	5,0	0,0	2,3	0,2	-3,6
BE-Belgium	-1,9	2,0	-4,9	4,1	-2,6	0,0	-3,0	2,1	-2,4	4,1
CZ-Czech Republic	-3,7	0,0	-12,5	-1,0	-3,2	-4,0	-9,1	-1,0	-9,6	3,1
DK-Denmark	16,7	0,0	-	-	11,8	1,3	-	-	-	-
FI-Finland	0,0	-0,4	0,7	-1,1	-4,8	-2,0	0,7	-0,7	5,8	0,9
FR-France	-3,2	-5,2	2,6	-3,2	-0,6	-5,7	6,0	2,1	3,3	2,6
Germany ²	-1,1	2,7	1,4	5,2	-0,2	2,4	2,5	2,5	1,6	2,7
IE-Ireland	0,0	0,0	0,0	0,0	0,0	0,0	0,0	0,0	0,0	0,0
IT-Italy	-16,7	-56,7	-15,5	-57,0	-1,7	-50,3	1,5	-0,7	-14,0	-13,4
NL-Netherlands	-6,4	-4,0	-	-	-15,4	-9,1	-	-	-	-
PL-Poland	-7,5	5,1	-7,0	5,3	-6,0	0,0	0,6	0,2	-1,0	5,3
PT-Portugal	-24,1	0,0	-20,0	0,0	-6,3	-6,7	5,5	0,0	-14,7	7,1
SK-Slovakia	-13,4	-15,3	-24,2	-11,7	-24,5	-18,4	-12,4	4,2	0,4	8,3
ES-Spain	-34,2	-6,3	-	-	-30,8	-22,2	-	-	-	-
SE-Sweden	6,9	3,2	-	-	-	-	-	-	-	-
UK-United Kingdom	11,3	3,8	-2,0	4,2	-2,9	0,0	-11,9	0,4	1,0	4,2
Average EU	-6,2	-6,5	-13,1	-4,9	-10,5	-8,5	-7,3	1,8	-2,8	4,0
IL-Isreal	-9,0	0,0	5,3	0,0	0,8	0,0	15,7	0,0	4,4	0,0
NO-Norway	5,2	0,0	-2,7	0,0	0,0	0,0	-7,5	0,0	-2,7	0,0
CH-Switzerland	-7,3	0,0	-	-	-	-	-	-	-	-
TK-Turkey	8,3	4,6	11,9	6,4	10,0	6,7	3,3	1,7	1,7	-0,3
Average ERMCO	-2,6	-2,8	-8,3	-2,4	-5,6	-4,3	-5,9	0,3	-2,8	1,9
Russia	20,0	-16,7	9,1	-16,7	10,0	81,8	-9,1	0,0	-0,8	-54,2
USA	-17,9	0,0	-21,4	0,0	-36,7	0,0	-4,3	0,0	24,1	0,0
Japan	7,5	0,0	-91,8	0,0	-0,8	0,0	-92,4	0,0	-91,7	0,0

Legend: data in bold are estimated

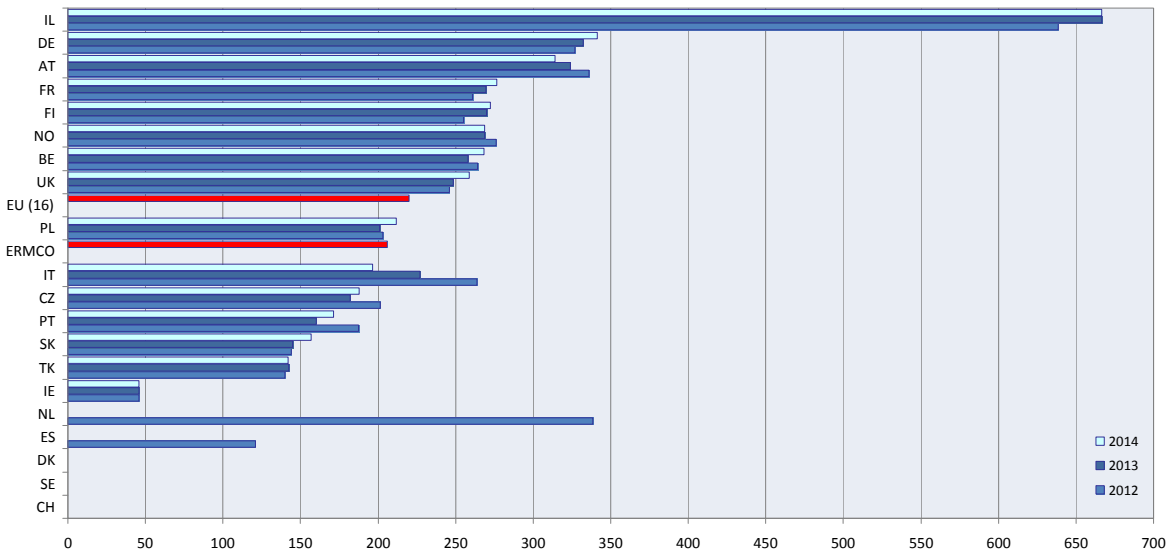
Turnover including delivery
[millions of €]



Turnover vs Production
[€/m³]



Turnover vs Employees
[x1000 € / employee]



ERMCO

EUROPEAN READY MIXED CONCRETE ORGANIZATION
ASSOCIATION EUROPEENNE DU BETON PRET A L'EMPLOI
EUROPÄISCHER TRANSPORTBETONVERBAND

Boulevard du Souverain 68
B-1170 Brussels
VAT BE 864 250 204

Tel: + 32 (2) 64 55 212
Fax: + 32 (2) 73 51 467
e-mail: secretariat@ermco.eu